

ST. CROIX RODS

ROD BUILDER CATALOG | 2011



Handcrafted BLANKS MADE IN THE U.S.A. | ACCESSORIES

To make the best rods in the business, St. Croix must partner with the best suppliers. We're especially proud of our network of graphite material partners, all of whom contribute to the exceptional performance, quality and value that define a St. Croix blank. This year, the 3M Company, a long-time St. Croix supply partner, will be supplying their exciting new 3M™ Matrix Resin to fuse the graphite in our highest performance SC^v graphite blanks. 3M's remarkable new composite resin uses nano-technology to significantly improve the strength and durability of graphite blanks, and when used in conjunction with our other advanced materials and proprietary design and manufacturing technologies, furthers our ability to build the best blanks on earth.

A BRIEF BACKGROUND ON GRAPHITE:

The fishing tackle industry uses graphite and carbon interchangeably. Technically speaking, the correct term is "carbon."

A lot has changed since the introduction of the first graphite fishing rods back in the mid-1970s. Designed largely by trial and error, early graphite rods were inspired by the imagination, experience and talent of the rod designers – and the availability of a steady stream of new and improved graphite fibers.

Graphite fiber, a bi-product of the space race, evolved quickly as aerospace applications for this exciting new material expanded. Each generation of "new" graphite was stronger and stiffer (e.g., "higher modulus") than previous generations as the "space race" ratcheted graphite development into high gear.

Rod makers took notice, and soon the space race created a "modulus race" in the fishing rod industry. As each new high-modulus graphite

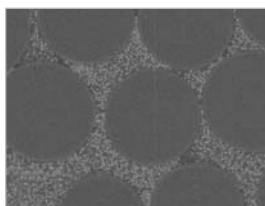
fiber was developed for aerospace, rod designers used it to create lighter, faster, more responsive fishing rods.

In the past decade, everything changed. Graphite fibers are now available in a huge selection of modulus and strength, and new high modulus / high strain fibers deliver both increased stiffness and superior strength. St. Croix currently uses five different graphite materials formulated to our exact specifications to design and build over 30 different series of rods – one of the largest in the industry.

Rod design has also evolved from the draftsman's table to the computer, and we now use sophisticated mathematical algorithms to design precise tapers for each graphite material to achieve the exact performance characteristics we want in our rods

3M™ MATRIX RESIN

THE TECHNOLOGY THAT MAKES OUR RODS SO STRONG IS INVISIBLE TO THE NAKED EYE. AT LEAST UNTIL YOU SET THE HOOK.



Carbon fiber composite shows uniform distribution of nano silica particles.

The 3M Company, the global leader in adhesive technology, recently introduced a new breakthrough resin that uses nano-sized (ultra-microscopic) spheres of silica as a homogeneous, non-abrasive filler between the carbon fibers of a graphite rod blank, which results in a much stronger, more sensitive finished product. We've named our formulation of this new resin NSi (Nano Silica), and we'll be using it to build all of our SC^v graphite blanks – plus a new offshore saltwater series.

The "nano-silica" particles in 3M's Matrix Resin are uniformly distributed and densely packed in the resin that binds the individual graphite fibers, which reinforces them during compression when the rod is flexed. This significantly increases the fibers' compression strength by resisting micro-buckling – for improved hoop and flex strength of the blank. The result is a 30% (or more) stronger blank without any change in the weight, action or power of the finished rod.



The nano-silica filler also improves the resin's adhesive bond between the carbon fibers, which increases the internal shear strength of the rod blank while further improving the flex strength. Almost twice as hard as conventional resins when fully cured, our tests reveal that rods manufactured with 3M's new Matrix Resin show both an increase in modulus for improved sensitivity, and a significant increase in fracture resistance and overall blank toughness.

The end results are astonishing. Rods built with 3M™ Matrix Resin are stronger, more durable and tougher – with significantly improved hoop/flex strength and resistance to fracture. All without an increase in weight or a change in the rod's action or power.

Strength and fatigue testing being performed on the Dynamic Analyzer. This machine is capable of simulating over 15,000 hard hook sets in 24 hours.



“The new 3M™ Matrix Resin has opened the door for us to become more creative in our rod blank designs. The strength improvement we’ve seen in our laboratory is incredible, with a 30% average increase in strength on existing products. The new 3M™ Matrix Resin has also allowed us to push the limits of design in new rod

series, like our new Legend® Salt. In that case, we were able to create substantially lighter, more sensitive saltwater rods without compromising strength.” — Jason Brunner, St. Croix’s Director of Engineering.

ST. CROIX TECHNOLOGIES:

A superior resin does not automatically result in a superior fishing rod. But when combined with St. Croix’s state-of-the-art computer-assisted rod design capabilities, our own proprietary design and manufacturing technologies, and over 60 years of rod-making experience, the new 3M™ Matrix Resin makes a great rod even better.

ADVANCED REINFORCING TECHNOLOGY™ (ART™)

St. Croix’s Advanced Reinforcing Technology (ART) uses horizontally wrapped, high-strength carbon fibers on the inside of the hollow blanks to strengthen critical areas of our highest performance rods – without adding bulk or extra weight. (See page 4)

INTEGRATED POLY CURVE® (IPC®) TECHNOLOGY

St. Croix’s proprietary Integrated Poly Curve (IPC) Technology was another breakthrough in blank design because it allows us to design rod tapers in continuous flowing curves instead of “step tapers” used previously. This results in smoother casting with no weak taper transition points. The continuous-curve tapers also transmit vibrations more efficiently for noticeably enhanced sensitivity. (See page 4)

ROD BLANKS OFFERED IN 2011 WITH THE NEW 3M™ MATRIX RESIN

In 2011, the following St. Croix blank series will be built with 3M™ Matrix Resin:

- SC^v fly, spinning and casting blanks
- SC^o graphite offshore blanks

WHAT IS MODULUS?

Modulus is the physical measure of a material’s stiffness, equal to the ratio of applied load (stress) to the resulting deformation of a material (strain). A fiber with higher modulus is harder to bend – and will snap back faster – than a lower modulus fiber of the same weight. That means a rod made of high-modulus graphite requires fewer fibers to achieve the same stiffness as a rod made with lower modulus graphite – so the higher modulus rod weighs less and telegraphs vibrations with more sensitivity. But higher modulus fibers also tend to be more brittle than lower modulus fibers, so rod designers must find just the right balance between stiffness and strength when working with high-modulus graphite fibers.

KEY DESIGN FACTORS

Other factors that impact the strength, weight, sensitivity and action of a rod include the type and amount of resin used to bind the fibers together, the amount of prepreg material used, the type of scrim used to create the sheet of graphite fibers that will form the blank, the pattern used to cut the sheet to its final dimensions, and the shape of the mandrel used to roll the graphite sheet into a finished blank. Rod action and weight are also impacted by the type and placement of guides.

ENGINEERING

When you set out to uncover what makes a St. Croix different from other rods, you need look no further than the engineer sitting right beside the rod designer. It's a partnership that's produced such breakthroughs as St. Croix's exclusive Integrated Poly Curve® and Advanced Reinforcing Technology.™ Rod performance is only as good as the design behind it – so before we even think about sending a rod through for production, we spend as much time as necessary in the design department to ensure that every St. Croix rod is engineered and developed to outperform all others.

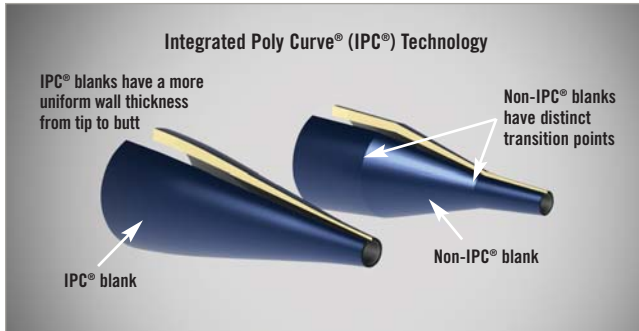


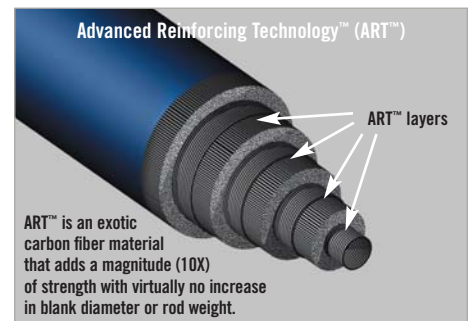
Illustration above is an exaggeration to demonstrate the difference between IPC and non-IPC blanks.

Integrated Poly Curve® (IPC®) Technology

Developed exclusively by St. Croix, Integrated Poly Curve® (IPC®) tooling technology has rapidly become the engineering leader in rodmaking. Designed to eliminate all transitional points in the rod blank, IPC-engineered rods feature smoother actions, increased strength and greater sensitivity.

Advanced Reinforcing Technology™ (ART™)

Advanced Reinforcing Technology™ (ART™) is an exotic carbon fiber material that adds a magnitude (10X) of strength with virtually no increase in blank diameter or weight. ART significantly improves the hoop strength of the blank by preventing it from deforming or “ovaling” under a severe load, such as a powerful hook set or fish battle. ART is also a critical part of our slim-profile ferrule design.



OUR BLANK MATERIALS GUIDE

Great rods begin with the highest quality blank materials and expert manufacturing techniques and processes. Each material listed here is exclusive to St. Croix and is designed for specific performance characteristics.

SC^{VI}/NSi Resin Exotic, 62,000,000 modulus, high-strain graphite fiber now featuring 3M™ Matrix Resin. Used only as a complement to other graphite materials, this very expensive graphite is too high in modulus to be used as the primary material.

SC^V/NSi Resin Extraordinary, high-modulus/high-strain graphite fiber with carbon-matte scrim. Now featuring 3M™ Matrix Resin, this is the finest all-purpose blank material used in fishing rod manufacturing and is exclusive to St. Croix.

SC^{IV} Exceptional, high-modulus/high-strain graphite fiber. Similar to SC^V, but without the carbon-matte scrim.

SC^{III} Advanced, high-modulus/high-strain graphite fiber. Modulus is between SC^{IV} and SC^I.

SC^I/NSi Resin New 3M™ Matrix Resin version of our popular SC^I graphite fiber. This mid-modulus graphite fiber combined with 3M's nano resin creates rod blanks with unbeatable strength and durability.

SC^{II} Premium, mid-modulus graphite fiber with a higher strain rate than fibers commonly used by other rod manufacturers.

SC^{IW} A woven version of our SC^I material that's used exclusively in the lower section of the blank.

SCV GRAPHITE / NSI RESIN SPINNING BLANKS (GLOSS FOREST GREEN PEARL FINISH)   

MODEL	TYPE	EQUIVALENT ST. CROIX ROD MODEL	LENGTH	POWER	ACTION	PCS.	LINE WT. RATING	LURE WT. (OZ.)	BUTT DIAMETER (INCH)	TIP SIZE	BLANK WT. (OZ.)	SUG. HANDLE KIT	BLANK RETAIL PRICE
5S60ULF2-G	Trout/Panfish	LES60ULF2	6'	UL	FAST	2	2-6	1/32-3/16	0.300	3.5	0.9	HKS-2	\$135
5S70ULM2-G	Trout/Panfish	LES70ULM2	7'	UL	MOD.	2	2-6	1/32-3/16	0.320	4.0	1.0	HKS-2	\$165
5S66LF-G	Trout/Panfish/Walleye	LES66LF	6'6"	L	FAST	1	4-8	1/16-1/4	0.390	4.0	1.1	HKS-2	\$140
5S66LF2-G	Trout/Panfish/Walleye	LES66LF2	6'6"	L	FAST	2	4-8	1/16-1/4	0.345	4.0	1.3	HKS-2	\$155
5S70LF-G	Trout/Panfish/Walleye	LES70LF	7'	L	FAST	1	4-8	1/16-1/4	0.395	4.0	1.3	HKS-2	\$150
5S60MLF-G	Bass/Walleye	LES60MLF	6'	ML	FAST	1	4-10	1/8-3/8	0.425	4.0	1.1	HKS-3	\$135
5S66MLF-G	Bass/Walleye	LES66MLF	6'6"	ML	FAST	1	4-10	1/8-3/8	0.450	3.5	1.3	HKS-4	\$145
5S66MLF2-G	Bass/Walleye	LES66MLF2	6'6"	ML	FAST	2	4-10	1/8-3/8	0.450	4.0	1.4	HKS-4	\$155
5S70MLF-G	Bass/Walleye	LES70MLF	7'	ML	FAST	1	4-10	1/8-3/8	0.465	4.0	1.5	HKS-5	\$155
5S70MLF2-G	Bass/Walleye	LES70MLF2	7'	ML	FAST	2	4-10	1/8-3/8	0.455	4.0	1.6	HKS-5	\$165
* 5S76MLXF-G	Bass/Walleye	LES76MLXF	7'6"	ML	X-FAST	1	4-10	1/8-3/8	0.480	3.5	1.6	HKS-5	\$170
5S76MLXF2-G	Walleye	LES76MLXF2	7'6"	ML	X-FAST	2	4-10	1/8-3/8	0.485	4.0	1.6	HKS-5	\$180
5S60MF-G	Bass/Walleye	LES60MF	6'	M	FAST	1	6-12	3/16-5/8	0.425	4.5	1.2	HKS-3	\$140
5S63MXF-G	Bass/Walleye	LES63MXF	6'3"	M	X-FAST	1	6-10	1/8-1/2	0.450	4.0	1.4	HKS-3	\$145
5S66MF-G	Bass/Walleye	LES66MF	6'6"	M	FAST	1	6-12	3/16-5/8	0.445	4.5	1.4	HKS-4	\$150
5S66MF2-G	Bass/Walleye	LES66MF2	6'6"	M	FAST	2	6-12	3/16-5/8	0.450	4.5	1.5	HKS-4	\$160
5S68MXF-G	Bass/Walleye	LES/LEC68MXF	6'8"	M	X-FAST	1	6-12	3/16-5/8	0.460	4.5	1.6	HKS-4 / HKC-3	\$155
5S70MF-G	Bass/Walleye	LES70MF	7'	M	FAST	1	6-12	3/16-5/8	0.465	4.5	1.6	HKS-5	\$160
5S70MF2-G	Bass/Walleye	LES70MF2	7'	M	FAST	2	6-12	3/16-5/8	0.465	4.5	1.7	HKS-5	\$170
5S76MF-G	Bass/Walleye	LES76MF	7'6"	M	FAST	1	6-12	3/16-5/8	0.480	4.5	1.8	HKS-5	\$170
5S66MHF-G	Bass/Pike	LES66MHF	6'6"	MH	FAST	1	8-14	3/8-3/4	0.500	5.0	1.8	HKS-5	\$160
5S70MHF-G	Bass/Pike	LES70MHF	7'	MH	FAST	1	8-14	3/8-3/4	0.510	5.5	2.1	HKS-5	\$170

* New for 2011

SCV GRAPHITE / NSI RESIN SPINNING BLANKS (GLOSS BLUE/GREEN FLIP FINISH)   

MODEL	TYPE	EQUIVALENT ST. CROIX ROD MODEL	LENGTH	POWER	ACTION	PCS.	LINE WT. RATING	LURE WT. (OZ.)	BUTT DIAMETER (INCH)	TIP SIZE	BLANK WT. (OZ.)	SUG. HANDLE KIT	BLANK RETAIL PRICE
5S69MLXF-B	Drop Shot Bass	XS/XC69MLXF	6'9"	ML	X-FAST	1	6-10	1/8-1/2	0.430	4.0	1.7	HKS-4 / HKC-3	\$150
5S70MLF-B	Bass/Walleye	XS70MLF	7'	ML	FAST	1	4-10	1/8-3/8	0.465	4.0	1.5	HKS-5	\$155
* 5S63MXF-B	Bass/Walleye	XS63MXF	6'3"	M	X-FAST	1	6-10	1/8-1/2	0.445	4.5	1.5	HKS-3	\$145
5S66MF-B	Bass/Walleye	XS66MF	6'6"	M	FAST	1	6-12	3/16-5/8	0.445	4.5	1.4	HKS-4	\$150
* 5S610MXF-B	Shaky Head Bass	XS610MXF	6'10"	ML	X-FAST	1	6-12	1/8-5/16	0.470	4.0	2.0	HKS-4	\$170
5S70MF-B	Bass/Walleye	XS70MF	7'	M	FAST	1	6-12	3/16-5/8	0.465	4.5	1.6	HKS-5	\$160
5S66MHF-B	Bass/Pike	XS66MHF	6'6"	MH	FAST	1	8-14	3/8-3/4	0.500	5.0	1.8	HKS-5	\$160
5S70MHF-B	Bass/Pike	XS70MHF	7'	MH	FAST	1	8-14	3/8-3/4	0.510	5.5	2.1	HKS-5	\$170

* New for 2011

SCV GRAPHITE / NSI RESIN CASTING BLANKS (GLOSS FOREST GREEN PEARL FINISH)   

MODEL	TYPE	EQUIVALENT ST. CROIX ROD MODEL	LENGTH	POWER	ACTION	PCS.	LINE WT. RATING	LURE WT. (OZ.)	BUTT DIAMETER (INCH)	TIP SIZE	BLANK WT. (OZ.)	SUG. HANDLE KIT	BLANK RETAIL PRICE
5C60MF-G	Bass/Walleye	LEC60MF	6'	M	FAST	1	10-17	1/4-5/8	0.425	4.5	1.4	HKC-2	\$145
5C66MF-G	Bass/Walleye	LEC66MF	6'6"	M	FAST	1	10-17	1/4-5/8	0.460	4.5	1.8	HKC-3	\$165
5C70MF-G	Bass/Walleye	LEC70MF	7'	M	FAST	1	10-17	1/4-5/8	0.465	5.0	2.0	HKC-3	\$175
5C66MHF-G	Bass/Pike	LEC66MHF	6'6"	MH	FAST	1	12-20	3/8-1	0.520	5.0	2.2	HKC-3	\$175
5C70MHF-G	Bass/Pike	LEC70MHF	7'	MH	FAST	1	12-20	3/8-1	0.530	5.5	2.4	HKC-3	\$185
5C70HF-G	Bass/Pike	LEC70HF	7'	H	FAST	1	14-25	3/8-1/2	0.555	6.0	2.5	HKC-3 / HKC-4	\$195

SCV GRAPHITE / NSI RESIN CASTING BLANKS (GLOSS BLUE/GREEN FLIP FINISH)   

MODEL	TYPE	EQUIVALENT ST. CROIX ROD MODEL	LENGTH	POWER	ACTION	PCS.	LINE WT. RATING	LURE WT. (OZ.)	BUTT DIAMETER (INCH)	TIP SIZE	BLANK WT. (OZ.)	SUG. HANDLE KIT	BLANK RETAIL PRICE
5C66MF-B	Bass/Walleye	XC66MF	6'6"	M	FAST	1	10-17	1/4-5/8	0.460	4.5	1.8	HKC-3	\$165
5C68MXF-B	Bass/Walleye	XC/XS68MXF	6'8"	M	X-FAST	1	8-14	1/4-5/8	0.465	4.5	1.7	HKC-3 / HKS-4	\$155
* 5C610MXF-B	Shaky Head Bass	XC610MXF	6'10"	M	X-FAST	1	10-14	1/8-5/16	0.480	4	2.3	HKC-3	\$170
5C70MF-B	Bass/Walleye	XC70MF	7'	M	FAST	1	10-17	1/4-5/8	0.465	5.0	2.0	HKC-3	\$175
* 5C72MM-B	Bass/Walleye	XC72MM	7'2"	M	MODERATE	1	8-14	1/4-5/8	0.430	5.0	1.4	HKC-3	\$160
5C66MHF-B	Bass/Pike	XC66MHF	6'6"	MH	FAST	1	12-20	3/8-1	0.520	5.0	2.2	HKC-3	\$175
5C70MHF-B	Bass/Pike	XC70MHF	7'	MH	FAST	1	12-20	3/8-1	0.530	5.5	2.4	HKC-3	\$185
* 5C72MHM-B	Bass/Walleye	XC72MHM	7'2"	MH	MODERATE	1	10-20	3/8-1	0.455	5.0	1.9	HKC-3	\$170
5C76MHMF-B	Bass	XC76MHMF	7'6"	MH	MOD. FAST	1	12-25	3/8-1/4	0.540	6.5	3.0	HKC-4	\$195
5C70HF-B	Bass/Pike	XC70HF	7'	H	FAST	1	14-25	3/8-1/2	0.555	6.0	2.5	HKC-3 / HKC-4	\$195
5C711HMF-B	Bass	XC711HMF	7'11"	H	MOD. FAST	1	14-30	1/2-2	0.635	6.5	4.0	HKC-4 / HKC-5	\$250

* New for 2011

SC^V GRAPHITE / NSI RESIN SALMON/STEELHEAD BLANKS (GLOSS FOREST GREEN PEARL FINISH)



MODEL	TYPE	EQUIVALENT ST. CROIX ROD MODEL	LENGTH	POWER	ACTION	PCS.	LINE WT. RATING	LURE WT. (OZ.)	BUTT DIAMETER (INCH)	TIP SIZE	BLANK WT. (OZ.)	SUG. HANDLE KIT	BLANK RETAIL PRICE
5S90LM2-G	Spinning- Drift	LES90LM2	9'	L	MODERATE	2	4-8	1/16-3/8	0.425	4.0	2.2	HKS-6 / HKS-7	\$190
5S96LM2-G	Spinning- Drift	LES96LM2	9'6"	L	MODERATE	2	4-8	1/16-3/8	0.430	4.0	2.5	HKS-6 / HKS-7	\$195
5SC90MLF2-G	Spinning/Casting	LES90MLF2	9'	ML	FAST	2	6-10	1/8-5/8	0.445	4.0	2.4	HKS-6 / HKC-6	\$195
5SC96MLF2-G	Spinning/Casting	LES96MLF2	9'6"	ML	FAST	2	6-10	1/8-5/8	0.460	4.0	2.8	HKS-6 / HKC-6	\$200
5SC86MF2-G	Spinning/Casting	LES86MF2	8'6"	M	FAST	2	8-12	1/4-3/4	0.470	4.0	2.4	HKS-6 / HKC-6	\$190
5SC90MF2-G	Spinning/Casting	LES90MF2	9'	M	FAST	2	8-12	1/4-3/4	0.475	4.0	2.7	HKS-6 / HKC-6	\$200
5SC96MF2-G	Spinning/Casting	LES96MF2	9'6"	M	FAST	2	8-12	1/4-3/4	0.480	4.0	3.0	HKS-6 / HKC-6	\$205
5SC86MHF2-G	Spinning/Casting	LES/LEC86MHF2	8'6"	MH	FAST	2	8-17	3/8-1	0.500	4.5	2.6	HKS-6 / HKC-6	\$195
5SC90MHF2-G	Spinning/Casting	LES/LEC90MHF2	9'	MH	FAST	2	8-17	3/8-1	0.515	4.5	3.0	HKS-6 / HKC-6	\$205
5SC96MHF2-G	Spinning/Casting	LES/LEC96MHF2	9'6"	MH	FAST	2	8-17	3/8-1	0.520	4.5	3.5	HKS-6 / HKC-6	\$210
5SC86HF2-G	Spinning/Casting	LES/LEC86HF2	8'6"	H	FAST	2	12-25	1/2-2	0.545	4.5	2.9	HKS-6 / HKC-6	\$200
5SC90HF2-G	Spinning/Casting	LES/LEC90HF2	9'	H	FAST	2	12-25	1/2-2	0.545	4.5	3.1	HKS-6 / HKC-6	\$210
5SC96HF2-G	Spinning/Casting	LES/LEC96HF2	9'6"	H	FAST	2	12-25	1/2-2	0.555	5.0	3.6	HKS-6 / HKC-6	\$215

SC^V GRAPHITE CASTING BLANKS (GLOSS COBALT BLUE PEARL FINISH)



MODEL	TYPE	EQUIVALENT ST. CROIX ROD MODEL	LENGTH	POWER	ACTION	PCS.	LINE WT. RATING	LURE WT. (OZ.)	BUTT DIAMETER (INCH)	TIP SIZE	BLANK WT. (OZ.)	SUG. HANDLE KIT	BLANK RETAIL PRICE
4C69MLXF	Drop Shot	LTBC/LTBS69MLXF	6'9"	ML	X-FAST	1	6-10	1/8-1/2	0.445	4.5	1.9	HKC-3 / HKS-4	\$150
4C63MF	Sniper Spinnerbait	LTBC63MF	6'3"	M	FAST	1	10-17	1/4-5/8	0.440	4.5	1.5	HKC-2	\$140
4C66MF	Jerkbait	LTBC66MF	6'6"	M	FAST	1	10-17	1/4-5/8	0.450	4.5	1.6	HKC-3	\$145
4C68MXF	Top Water	LTBC/LTBS/TWS68MXF	6'8"	M	X-FAST	1	8-14	1/4-5/8	0.470	4.5	1.8	HKC-3 / HKS-4	\$150
4C70MF	Teaser	LTBC70MF	7'	M	FAST	1	10-17	1/4-5/8	0.480	5.5	2.2	HKC-3	\$155
4C66MHF	Jig-N-Worm	LTBC66MHF	6'6"	MH	FAST	1	12-20	3/8-1	0.425	6.0	2.5	HKC-3	\$155
4C70MHF	Sweeper Spinnerbait	LTBC70MHF	7'	MH	FAST	1	12-20	3/8-1	0.540	6.0	2.8	HKC-3	\$165
4C70MHXF	Finesse Jig	LTBC70MHXF	7'	MH	X-FAST	1	12-17	5/16-3/4	0.540	5.0	2.7	HKC-3	\$165
4C73MHF	Carolina Rig	LTBC73MHF	7'3"	MH	FAST	1-TEL.	12-25	3/8-1 1/4	0.605	6.5	3.1	HKC-4	\$225
4C76MHMF	Pitchin'	LTBC76MHMF	7'6"	MH	MOD. FAST	1-TEL.	12-25	3/8-1 1/4	0.305	6.0	3.7	HKC-4	\$225
4C70HF	Slop-N-Frog	LTBC70HF	7'	H	FAST	1	14-25	3/8-1 1/2	0.570	6.0	2.9	HKC-3 / HKC-4	\$170
4C79HF	Swim Bait	LTBC79HF	7'9"	H	FAST	1	14-30	1-4	0.600	6.0	3.2	HKC-5 / HKC-7	\$200
4C710HM	Magnum Cranker	LTBC710HM	7'10"	H	MODERATE	1	12-25	1/2-1 3/8	0.530	5.5	2.7	HKC-4 / HKC-5	\$160
4C711HMF	Big Gulp	LTBC711HMF	7'11"	H	MOD. FAST	1	14-30	1/2-2	0.600	6.0	3.9	HKC-4 / HKC-5	\$180
4C80HMF	Flippin'	LTBC80HMF	8'	H	MOD. FAST	1-TEL.	14-30	1/2-2	0.650	6.5	4.4	HKC-4 / HKC-5	\$235
4C73XHF	Big Jig	LTBC73XHF	7'3"	XH	FAST	1	17-30	1/2-2 1/2	0.600	6.0	3.6	HKC-4 / HKC-5	\$185
4C80XHF	Mega Swim Bait	LTBC80XHF	8'	XH	FAST	1	20-50	3-8	0.640	7.0	4.4	HKC-5 / HKC-7	\$220

SC^V GRAPHITE SPINNING BLANKS (GLOSS COBALT BLUE PEARL FINISH)



MODEL	TYPE	EQUIVALENT ST. CROIX ROD MODEL	LENGTH	POWER	ACTION	PCS.	LINE WT. RATING	LURE WT. (OZ.)	BUTT DIAMETER (INCH)	TIP SIZE	BLANK WT. (OZ.)	SUG. HANDLE KIT	BLANK RETAIL PRICE
4S60LF	Finesse Rig	TWS60LF	6'	L	FAST	1	4-8	1/16-1/4	0.350	4.0	1.2	HKS-2	\$120
4S66MLF	Jig-N-Rig	LTBS/TWS66MLF	6'6"	ML	FAST	1	4-10	1/8-3/8	0.450	4.0	1.4	HKS-4	\$130
4S70MLF	Lindy Rig	TWS70MLF	7'	ML	FAST	1	4-10	1/8-3/8	0.470	4.0	1.7	HKS-5	\$140
4S76MLF	Live Bait Rig	TWS76MLF	7'6"	ML	FAST	1	4-10	1/8-3/8	0.445	4.0	1.8	HKS-5	\$145
4S80MLF	Slip Stick	TWS80MLF	8'	ML	FAST	1-TEL.	4-10	1/8-3/8	0.520	4.5	2.8	HKS-5 / HKS-6	\$185
4S510MXF	Skippin'	LTBS510MXF	5'10"	M	X-FAST	1	8-12	3/16-5/8	0.425	4.5	1.3	HKS-3	\$125
4S63MXF	Vertical Jig	LTBS/TWS63MXF	6'3"	M	X-FAST	1	6-10	1/8-1/2	0.440	4.5	1.4	HKS-3 / HKS-4	\$130
4S70MF	Tube	LTBS70MF	7'	M	FAST	1	6-12	3/16-5/8	0.455	5.5	1.8	HKS-5	\$140
4S70MM	Shallow Cranker	LTBC/TWS/TWC70MM	7'	M	MODERATE	1	4-10	1/8-3/8	0.425	5.0	1.6	HKS-5 / HKC-3	\$130
4S70MHM	Deep Cranker	LTBC/TWS/TWC70MHM	7'	MH	MODERATE	1	6-12	1/4-3/4	0.445	5.0	2.0	HKS-5 / HKC-3	\$140

SC^V GRAPHITE MUSKY BLANKS (GLOSS COBALT BLUE PEARL FINISH)



MODEL	TYPE	EQUIVALENT ST. CROIX ROD MODEL	LENGTH	POWER	ACTION	PCS.	LINE WT. RATING	LURE WT. (OZ.)	BUTT DIAMETER (INCH)	TIP SIZE	BLANK WT. (OZ.)	SUG. HANDLE KIT	BLANK RETAIL PRICE
4M73MHF	Downsizer- Small Baits	TM/LTM73MHF	7'3"	MH	FAST	1	20-50	3/4-2 1/2	0.615	6.5	3.6	HKC-7	\$200
4M80MHF	Top-N-Tail- Topwater & Bucktails	TM/LTM80MHF	8'	MH	FAST	1	20-50	3/4-3	0.620	7.5	4.3	HKC-8	\$220
4M79HMF	Lip Stick- Large Crankbaits	TM/LTM79HMF	7'9"	H	MOD. FAST	1	30-65	2-6	0.610	7.5	4.3	HKC-8	\$220
4M86HF	Sling Blade- Large Bucktails	TM/LTM86HF	8'6"	H	FAST	1	30-65	2-6	0.685	7.5	6.2	HKC-8	\$260
* 4M90HF	Big Nasty-Large Tails & Rubber	TM/LTM90HF	9'	H	FAST	1	30-65	2-6	0.700	7.0	7.2	HKC-8	\$260
4M63XHF	Shorty- Jerkbait	TM/LTM63XHF	6'3"	XH	FAST	1	36-80	3-8	0.675	8.5	3.7	HKC-7	\$190
4M69XHF	Classic Jerk- Jerkbait	TM/LTM69XHF	6'9"	XH	FAST	1	36-80	3-8	0.680	9.0	4.1	HKC-7	\$210
4M76XHF	The Jerk- Jerkbait	TM/LTM76XHF	7'6"	XH	FAST	1	36-80	3-8	0.685	9.0	5.1	HKC-8	\$235
4M86XHF	Big Dawg- Large Wood & Plastic	TM/LTM86XHF	8'6"	XH	FAST	1	36-80	4-10	0.710	9.0	6.4	HKC-8	\$265

* New for 2011

SC^{III} GRAPHITE SPINNING BLANKS (CARBON PEARL FINISH)



MODEL	TYPE	EQUIVALENT ST. CROIX ROD MODEL	LENGTH	POWER	ACTION	PCS.	LINE WT. RATING	LURE WT. (OZ.)	BUTT DIAMETER (INCH)	TIP SIZE	BLANK WT. (OZ.)	SUG. HANDLE KIT	BLANK RETAIL PRICE
3S46ULF	Trout/Panfish	AVS46ULF	4'6"	UL	FAST	1	2-6	1/32-3/16	0.275	3.5	0.4	HKS-1	\$60
3S50ULF	Trout/Panfish	AVS50ULF	5'	UL	FAST	1	2-6	1/32-3/16	0.305	4.0	0.6	HKS-1	\$65
3S56ULF2	Trout/Panfish	AVS56ULF2	5'6"	UL	FAST	2	2-6	1/32-3/16	0.275	4.0	0.7	HKS-1	\$80
3S60ULF	Trout/Panfish	AVS60ULF	6'	UL	FAST	1	2-6	1/32-3/16	0.325	3.5	0.8	HKS-2	\$70
3S60ULF2	Trout/Panfish	AVS60ULF2	6'	UL	FAST	2	2-6	1/32-3/16	0.285	4.0	0.8	HKS-2	\$80
3S66ULF	Trout/Panfish	AVS66ULF	6'6"	UL	FAST	1	2-6	1/32-3/16	0.330	3.5	0.9	HKS-2	\$75
3S66ULF2	Trout/Panfish	AVS66ULF2	6'6"	UL	FAST	2	2-6	1/32-3/16	0.320	4.0	1.0	HKS-2	\$85
3S70ULF	Trout/Panfish	AVS70ULF	7'	UL	FAST	1	2-6	1/32-3/16	0.350	4.0	1.6	HKS-2	\$80
3S70ULM2	Trout/Panfish	AVS70ULM2	7'	UL	MODERATE	2	2-6	1/32-3/16	0.310	4.0	1.5	HKS-2	\$90
3S60LF	Trout/Panfish/Walleye	AVS60LF	6'	L	FAST	1	4-8	1/16-1/4	0.330	4.0	1.0	HKS-2	\$80
3S66LF	Trout/Panfish/Walleye	AVS66LF	6'6"	L	FAST	1	4-8	1/16-1/4	0.350	3.5	1.2	HKS-2	\$85
3S66LF2	Trout/Panfish/Walleye	AVS66LF2	6'6"	L	FAST	2	4-8	1/16-1/4	0.335	4.0	1.1	HKS-2	\$95
3S60MLF	Bass/Walleye	AVS60MLF	6'	ML	FAST	1	4-10	1/8-3/8	0.385	4.5	1.3	HKS-3	\$85
3S63MLXF	Bass/Walleye	AVS63MLXF	6'3"	ML	X-FAST	1	4-8	1/16-3/8	0.405	4.0	1.6	HKS-3	\$85
3S66MLF	Bass/Walleye	AVS66MLF	6'6"	ML	FAST	1	4-10	1/8-3/8	0.400	4.5	1.5	HKS-4	\$90
3S66MLF2	Bass/Walleye	AVS66MLF2	6'6"	ML	FAST	2	4-10	1/8-3/8	0.415	4.5	1.6	HKS-4	\$100
3S69MLXF	Drop Shot Bass	AVS69MLXF	6'9"	ML	X-FAST	1	6-10	1/8-3/8	0.400	4.0	1.7	HKS-4	\$95
3S70MLF	Bass/Walleye	AVS70MLF	7'	ML	FAST	1	4-10	1/8-3/8	0.410	4.5	1.8	HKS-4 / HKS-5	\$95
3S70MLF2	Bass/Walleye	AVS70MLF2	7'	ML	FAST	2	4-10	1/8-3/8	0.420	4.0	1.8	HKS-4 / HKS-5	\$105
3S76MLXF	Walleye	AVS76MLXF	7'6"	ML	X-FAST	1	4-10	1/8-3/8	0.420	4.0	2.0	HKS-5	\$100
3S76MLXF2	Walleye	AVS76MLXF2	7'6"	ML	X-FAST	2	4-10	1/8-3/8	0.430	4.0	2.0	HKS-5	\$110
3S80MLM2	Float-N-Fly Bass	AVS80MLM2	8'	ML	MODERATE	2	4-8	1/16-5/16	0.400	4.5	1.7	HKS-5 / HKS-9	\$105
3S59MXF	Bass/Walleye	AVS59MXF	5'9"	M	X-FAST	1	6-10	1/8-1/2	0.485	4.5	1.4	HKS-3	\$85
3S60MF	Bass/Walleye	AVS60MF	6'	M	FAST	1	6-12	3/16-5/8	0.465	5.0	1.4	HKS-3	\$85
3S63MXF	Bass/Walleye	AVS63MXF	6'3"	M	X-FAST	1	6-10	1/8-1/2	0.505	4.5	1.7	HKS-3	\$85
3S66MF	Bass/Walleye	AVS66MF	6'6"	M	FAST	1	6-12	3/16-5/8	0.500	5.0	1.6	HKS-4	\$95
3S66MF2	Bass/Walleye	AVS66MF2	6'6"	M	FAST	2	6-12	3/16-5/8	0.515	4.0	1.8	HKS-4	\$105
3S68MXF	Bass/Walleye	AVS68MXF	6'8"	M	X-FAST	1	6-12	3/16-5/8	0.515	4.5	1.9	HKS-4	\$95
3S70MF	Bass/Walleye	AVS70MF	7'	M	FAST	1	6-12	3/16-5/8	0.510	4.5	1.9	HKS-5	\$100
3S70MF2	Bass/Walleye	AVS70MF2	7'	M	FAST	2	6-12	3/16-5/8	0.530	4.0	1.9	HKS-5	\$110
3S66MHF	Bass/Pike	AVS66MHF	6'6"	MH	FAST	1	8-14	3/8-3/4	0.510	5.5	1.9	HKS-4 / HKS-5	\$100
3S66MHF2	Bass/Pike	AVS66MHF2	6'6"	MH	FAST	2	8-14	3/8-3/4	0.525	4.5	2.0	HKS-4 / HKS-5	\$110
3S70MHF	Bass/Pike	AVS70MHF	7'	MH	FAST	1	8-14	3/8-3/4	0.530	6.0	2.3	HKS-5	\$105

SC^{III} GRAPHITE SPINNING BLANKS (FUCHSIA METALLIC FINISH)



MODEL	TYPE	EQUIVALENT ST. CROIX ROD MODEL	LENGTH	POWER	ACTION	PCS.	LINE WT. RATING	LURE WT. (OZ.)	BUTT DIAMETER (INCH)	TIP SIZE	BLANK WT. (OZ.)	SUG. HANDLE KIT	BLANK RETAIL PRICE
3S60LF-F	Trout/Panfish/Walleye	APS60LF	6'	L	FAST	1	4-8	1/16-1/4	0.330	4.0	1.0	HKS-2	\$80
3S63MLXF-F	Bass/Walleye	APS63MLXF	6'3"	ML	X-FAST	1	4-8	1/16-3/8	0.405	4.0	1.6	HKS-3	\$85
3S66MLF-F	Bass/Walleye	APS66MLF	6'6"	ML	FAST	1	4-10	1/8-3/8	0.400	4.5	1.5	HKS-4	\$90
3S66MLF2-F	Bass/Walleye	APS66MLF2	6'6"	ML	FAST	2	4-10	1/8-3/8	0.415	4.5	1.6	HKS-4	\$100
3S68MXF-F	Bass/Walleye	APS68MXF	6'8"	M	X-FAST	1	6-12	3/16-5/8	0.515	4.5	1.9	HKS-4	\$95
3S70MF-F	Bass/Walleye	APS70MF	7'	M	FAST	1	6-12	3/16-5/8	0.510	4.5	1.9	HKS-5	\$100

SC^{III} GRAPHITE CASTING BLANKS (CARBON PEARL FINISH)



MODEL	TYPE	EQUIVALENT ST. CROIX ROD MODEL	LENGTH	POWER	ACTION	PCS.	LINE WT. RATING	LURE WT. (OZ.)	BUTT DIAMETER (INCH)	TIP SIZE	BLANK WT. (OZ.)	SUG. HANDLE KIT	BLANK RETAIL PRICE
3C66MLF	Bass/Walleye	AVC66MLF	6'6"	ML	FAST	1	8-12	3/16-1/2	0.410	5.0	1.7	HKC-3	\$95
3C69MLXF	Drop Shot Bass	AVC69MLXF	6'9"	ML	X-FAST	1	6-10	1/8-1/2	0.410	4.0	1.8	HKC-3	\$100
3C60MF	Bass	AVC60MF	6'	M	FAST	1	10-17	1/4-5/8	0.475	5.5	1.6	HKC-2	\$90
3C62MXF	Bass/Walleye	AVC62MXF	6'2"	M	X-FAST	1	8-14	1/4-5/8	0.505	4.5	1.7	HKC-2	\$95
3C66MF	Bass	AVC66MF	6'6"	M	FAST	1	10-17	1/4-5/8	0.505	5.5	1.8	HKC-3	\$100
3C66MM	Crankbait Bass/Walleye	AVC66MM	6'6"	M	MODERATE	1	8-14	1/4-5/8	0.405	4.5	1.3	HKC-3	\$90
3C68MXF	Bass/Walleye	AVC68MXF	6'8"	M	X-FAST	1	8-14	1/4-5/8	0.520	4.5	2.0	HKC-3	\$100
3C70MF	Bass	AVC70MF	7'	M	FAST	1	10-17	1/4-5/8	0.515	5.5	2.0	HKC-3	\$105
3C70MM	Crankbait Bass/Walleye	AVC70MM	7'	M	MODERATE	1	8-14	1/4-5/8	0.420	4.5	1.4	HKC-3	\$95
3C60MHF	Bass/Pike/Saltwater	AVC60MHF	6'	MH	FAST	1	12-20	3/8-1	0.515	5.5	2.0	HKC-2	\$95
3C66MHF	Bass/Pike/Saltwater	AVC66MHF	6'6"	MH	FAST	1	12-20	3/8-1	0.525	6.5	2.3	HKC-3	\$105
3C66MHM	Crankbait Bass	AVC66MHM	6'6"	MH	MODERATE	1	10-20	3/8-1	0.430	5.0	1.7	HKC-3	\$95
3C70MHF	Bass/Pike/Saltwater	AVC70MHF	7'	MH	FAST	1	12-20	3/8-1	0.535	6.5	2.6	HKC-3	\$110
3C70MHM	Crankbait Bass	AVC70MHM	7'	MH	MODERATE	1	10-20	3/8-1	0.440	5.0	1.9	HKC-3	\$100
3C70MHXF	Bass	AVC70MHXF	7'	MH	X-FAST	1	12-17	5/16-3/4	0.535	5.0	2.6	HKC-3	\$110
3C76MHMF	Flippin'/Pitchin' Bass	AVC76MHMF	7'6"	MH	MOD. FAST	1	12-25	3/8-1 1/4	0.560	6.0	3.3	HKC-4	\$130
3C66HF	Bass/Pike/Saltwater	AVC66HF	6'6"	H	FAST	1	14-25	3/8-1 1/2	0.550	6.0	2.5	HKC-3	\$110
3C70HF	Bass/Pike/Saltwater	AVC70HF	7'	H	FAST	1	14-25	3/8-1 1/2	0.565	7.0	2.7	HKC-4	\$115
3C70HM	Crankbait Bass	AVC70HM	7'	H	MODERATE	1	12-25	1/2-1 3/8	0.465	6.5	2.5	HKC-3	\$110
3C710HMF	Flippin' Bass	AVC710HMF	7'10"	H	MOD. FAST	1-TEL.	14-30	1/2-2	0.645	7.5	4.1	HKC-4	\$180

SC^{III} GRAPHITE CASTING BLANKS (FUCHSIA METALLIC FINISH)



MODEL	TYPE	EQUIVALENT ST. CROIX ROD MODEL	LENGTH	POWER	ACTION	PCS.	LINE WT. RATING	LURE WT. (OZ.)	BUTT DIAMETER (INCH)	TIP SIZE	BLANK WT. (OZ.)	SUG. HANDLE KIT	BLANK RETAIL PRICE
3C66MF-F	Bass	APC66MF	6'6"	M	FAST	1	10-17	1/4-5/8	0.505	5.5	1.8	HKC-3	\$100
3C68MXF-F	Bass	APC68MXF	6'8"	M	X-FAST	1	8-14	1/4-5/8	0.520	4.5	2.0	HKC-3	\$100
3C70MF-F	Bass	APC70MF	7'	M	FAST	1	10-17	1/4-5/8	0.515	5.5	2.0	HKC-3	\$105
3C66MHF-F	Bass/Pike/Saltwater	APC66MHF	6'6"	MH	FAST	1	12-20	3/8-1	0.525	6.5	2.3	HKC-3	\$105

SC^{III} GRAPHITE SALMON/STEELHEAD BLANKS (CARBON PEARL FINISH)



MODEL	TYPE	EQUIVALENT ST. CROIX ROD MODEL	LENGTH	POWER	ACTION	PCS.	LINE WT. RATING	LURE WT. (OZ.)	BUTT DIAMETER (INCH)	TIP SIZE	BLANK WT. (OZ.)	SUG. HANDLE KIT	BLANK RETAIL PRICE
3S106ULS2	Spinning- Noodle	AVS106ULS2	10'6"	UL	SLOW	2	2-6	1/16-1/4	0.415	4.0	2.0	HKS-6 / HKS-7	\$135
3S90LM2	Spinning- Drift	AVS90LM2	9'	L	MODERATE	2	4-8	1/16-3/8	0.440	4.0	2.5	HKS-6 / HKS-7	\$130
3S96LM2	Spinning- Drift	AVS96LM2	9'6"	L	MODERATE	2	4-8	1/16-3/8	0.445	4.0	2.7	HKS-6 / HKS-7	\$135
3S110LM2	Spinning- Drift	AVS110LM2	11'	L	MODERATE	2	4-8	1/16-3/8	0.445	5.0	2.6	HKS-6 / HKS-9	\$140
3SC90MLF2	Spinning/Casting	AVS/AVC90MLF2	9'	ML	FAST	2	6-10	1/8-5/8	0.460	4.0	2.6	HKS-6 / HKC-6	\$130
3SC96MLF2	Spinning/Casting	AVS/AVC96MLF2	9'6"	ML	FAST	2	6-10	1/8-5/8	0.470	4.0	3.0	HKS-6 / HKC-6	\$135
3SC106MLF2	Spinning/Casting	AVS/AVC106MLF2	10'6"	ML	FAST	2	6-10	1/8-5/8	0.475	4.0	3.4	HKS-6 / HKC-6	\$140
3CP130MLM2	Center Pin	AVS130MLM2	13'	ML	MODERATE	2	6-10	1/4-5/8	0.500	4.0	3.5	HKS-9	\$150
3CP150MLM3	Center Pin	AVS150MLM3	15'	ML	MODERATE	3	6-10	1/4-5/8	0.580	4.0	4.3	HKS-9	\$170
3C80MXF	Casting- Plug	AVC80MXF	8'	M	X-FAST	1	10-20	3/8-1	0.555	4.0	2.9	HKC-6	\$120
3SC86MF2	Spinning/Casting	AVS/AVC86MF2	8'6"	M	FAST	2	8-12	1/4-3/4	0.480	4.5	2.6	HKS-6 / HKC-6	\$130
3SC90MF2	Spinning/Casting	AVS/AVC90MF2	9'	M	FAST	2	8-12	1/4-3/4	0.485	4.5	2.9	HKS-6 / HKC-6	\$135
3SC96MF2	Spinning/Casting	AVS/AVC96MF2	9'6"	M	FAST	2	8-12	1/4-3/4	0.495	4.5	3.2	HKS-6 / HKC-6	\$140
3SC106MF2	Spinning/Casting	AVS/AVC106MF2	10'6"	M	FAST	2	8-12	1/4-3/4	0.515	4.5	4.0	HKS-6 / HKC-6	\$150
3C76MHXF	Casting- Hover	AVC76MHXF	7'6"	MH	X-FAST	1	10-20	1-3	0.550	4.5	3.0	HKC-6	\$120
3SC86MHF2	Spinning/Casting	AVS/AVC86MHF2	8'6"	MH	FAST	2	8-17	3/8-1	0.515	5.0	2.9	HKS-6 / HKC-6	\$135
3SC90MHF2	Spinning/Casting	AVS/AVC90MHF2	9'	MH	FAST	2	8-17	3/8-1	0.525	5.0	3.2	HKS-6 / HKC-6	\$140
3SC96MHF2	Spinning/Casting	AVS/AVC96MHF2	9'6"	MH	FAST	2	8-17	3/8-1	0.535	5.0	3.4	HKS-6 / HKC-6	\$145
3C80HF	Casting- Backbounce	AVC80HF	8'	H	FAST	1	12-25	1-6	0.640	6.0	3.6	HKC-6	\$130
3SC86HF2	Spinning/Casting	AVS/AVC86HF2	8'6"	H	FAST	2	12-25	1/2-2	0.600	5.5	3.2	HKS-6 / HKC-6	\$140
3SC90HF2	Spinning/Casting	AVS/AVC90HF2	9'	H	FAST	2	12-25	1/2-2	0.550	5.0	3.3	HKS-6 / HKC-6	\$145
3C90HM2	Casting	AVC90HM2	9'	H	MODERATE	2	12-25	1/2-2	0.555	5.0	3.5	HKC-6	\$145
3SC96HF2	Spinning/Casting	AVS/AVC96HF2	9'6"	H	FAST	2	12-25	1/2-2	0.570	5.0	3.6	HKS-6 / HKC-6	\$150
3C106HM2	Casting	AVC106HM2	10'6"	H	MODERATE	2	12-25	1/2-2	0.550	5.0	3.9	HKC-6	\$170

SC^{III} GRAPHITE CARP BLANKS (CARBON PEARL FINISH)



MODEL	TYPE	EQUIVALENT ST. CROIX ROD MODEL	LENGTH	POWER	ACTION	PCS.	LINE WT. RATING	LURE WT. (OZ.)	BUTT DIAMETER (INCH)	TIP SIZE	BLANK WT. (OZ.)	SUG. HANDLE KIT	BLANK RETAIL PRICE
* 3CS96MMF2	Spinning	ACS96MMF2	9'6"	M	MOD. FAST	2	8-25	1/2-3	0.570	5.5	3.9	HKS-9	\$150
* 3CS120MHMF2	Spinning	ACS120MHMF2	12'	MH	MOD. FAST	2	8-25	1/2-4	0.615	6.5	7.5	HKS-9	\$200

* New for 2011

SC^{II} GRAPHITE SPINNING BLANKS (GLOSS BLACK PEARL FINISH)

MODEL	TYPE	EQUIVALENT ST. CROIX ROD MODEL	LENGTH	POWER	ACTION	PCS.	LINE WT. RATING	LURE WT. (OZ.)	BUTT DIAMETER (INCH)	TIP SIZE	BLANK WT. (OZ.)	SUG. HANDLE KIT	BLANK RETAIL PRICE
2S46ULM	Trout/Panfish	PS46ULM	4'6"	UL	MODERATE	1	2-6	1/16-1/4	0.265	4.0	0.5	HKS-1	\$50
2S50ULM	Trout/Panfish	PS50ULM	5'	UL	MODERATE	1	2-6	1/16-1/4	0.280	4.0	0.6	HKS-1	\$55
2S56ULF2	Trout/Panfish	PS56ULF2	5'6"	UL	FAST	2	2-6	1/32-3/16	0.280	4.0	0.7	HKS-1	\$65
2S60ULF	Trout/Panfish	PS60ULF	6'	UL	FAST	1	2-6	1/32-3/16	0.305	4.0	0.8	HKS-2	\$60
2S60ULF2	Trout/Panfish	PS60ULF2	6'	UL	FAST	2	2-6	1/32-3/16	0.285	4.5	0.9	HKS-2	\$65
2S66ULF	Trout/Panfish	PS66ULF	6'6"	UL	FAST	1	2-6	1/32-3/16	0.315	4.0	1.0	HKS-2	\$60
2S66ULF2	Trout/Panfish	PS66ULF2	6'6"	UL	FAST	2	2-6	1/32-3/16	0.310	4.5	1.1	HKS-2	\$70
2S70ULF2	Trout/Panfish	PS70ULF2	7'	UL	FAST	2	2-6	1/32-3/16	0.320	4.5	1.1	HKS-2	\$75
2S56LF	Trout/Walleye/Panfish	PS56LF	5'6"	L	FAST	1	4-8	1/16-5/16	0.315	4.5	0.8	HKS-1	\$60
2S60LF	Trout/Walleye/Panfish	PS60LF	6'	L	FAST	1	4-8	1/16-5/16	0.330	4.5	1.0	HKS-2	\$65
2S60LF4	Trout/Walleye/Panfish	PS60LF4	6'	L	FAST	4	4-8	1/16-5/16	0.310	4.0	1.1	HKS-2	\$100
2S66LF	Trout/Walleye/Panfish	PS66LF	6'6"	L	FAST	1	4-8	1/16-5/16	0.345	4.5	1.2	HKS-2	\$65
2S66LF2	Trout/Walleye/Panfish	PS66LF2	6'6"	L	FAST	2	4-8	1/16-5/16	0.335	4.5	1.3	HKS-2	\$75
2S86LM2	Float-N-Fly	PS86LM2	8'6"	L	MODERATE	2	4-8	1/16-5/16	0.385	4.5	1.7	HKS-6	\$85
2S60MLF	Bass/Walleye	PS60MLF	6'	ML	FAST	1	4-10	1/8-1/2	0.390	5.0	1.4	HKS-3	\$70
2S60MLF2	Bass/Walleye	PS60MLF2	6'	ML	FAST	2	4-10	1/8-1/2	0.445	4.5	1.7	HKS-3	\$75
2S66MLF	Bass/Walleye	PS66MLF	6'6"	ML	FAST	1	4-10	1/8-1/2	0.395	4.5	1.6	HKS-4	\$70
2S66MLF2	Bass/Walleye	PS66MLF2	6'6"	ML	FAST	2	4-10	1/8-1/2	0.410	4.5	1.5	HKS-4	\$80
2S66MLF3	Bass/Walleye	PS66MLF3	6'6"	ML	FAST	3	4-10	1/8-1/2	0.470	4.0	2.0	HKS-4	\$100
2S70MLF	Bass/Walleye	PS70MLF	7'	ML	FAST	1	4-10	1/8-1/2	0.435	5.0	1.8	HKS-4 / HKS-5	\$75
2S70MLF2	Bass/Walleye	PS70MLF2	7'	ML	FAST	2	4-10	1/8-1/2	0.485	4.5	1.9	HKS-4 / HKS-5	\$85
2S76MLF	Bass/Walleye	PS76MLF	7'6"	ML	FAST	1	4-10	1/8-1/2	0.450	4.5	2.1	HKS-5	\$80
2S56MF	Bass/Walleye	PS56MF	5'6"	M	FAST	1	6-12	1/4-5/8	0.440	5.5	1.1	HKS-1	\$65
2S60MF	Bass/Walleye	PS60MF	6'	M	FAST	1	6-12	1/4-5/8	0.465	5.0	1.4	HKS-3	\$70
2S60MF2	Bass/Walleye/Pike	PS60MF2	6'	M	FAST	2	6-12	1/4-5/8	0.475	4.5	1.5	HKS-3	\$80
2S66MF	Bass/Walleye/Pike	PS66MF	6'6"	M	FAST	1	6-12	1/4-5/8	0.495	5.0	1.6	HKS-4	\$75
2S66MF2	Bass/Walleye/Pike	PS66MF2	6'6"	M	FAST	2	6-12	1/4-5/8	0.530	4.5	1.8	HKS-4	\$85
2S70MF	Bass/Walleye/Pike	PS70MF	7'	M	FAST	1	6-12	1/4-5/8	0.505	5.0	1.8	HKS-5	\$80
2S70MF2	Bass/Walleye/Pike	PS70MF2	7'	M	FAST	2	6-12	1/4-5/8	0.555	4.5	2.0	HKS-5	\$90
2S70MF3	Bass/Walleye/Saltwater	PS70MF3	7'	M	FAST	3	6-12	1/4-5/8	0.535	4.5	2.3	HKS-5	\$110
2S60MHF	Bass/Pike/Saltwater	PS60MHF	6'	MH	FAST	1	8-14	3/8-3/4	0.475	6.0	1.7	HKS-4	\$75
2S66MHF	Bass/Pike/Saltwater	PS66MHF	6'6"	MH	FAST	1	8-14	3/8-3/4	0.510	6.0	1.9	HKS-5	\$80
2S66MHF2	Bass/Pike/Saltwater	PS66MHF2	6'6"	MH	FAST	2	8-17	1/2-1	0.540	5.0	2.1	HKS-5	\$90
2S70MHF	Bass/Pike/Saltwater	PS70MHF	7'	MH	FAST	1	8-14	3/8-3/4	0.520	6.0	2.2	HKS-5	\$85
2S70HF	Bass/Pike/Saltwater	PS70HF	7'	H	FAST	1	10-20	1/2-1-1/2	0.540	6.0	2.9	HKS-6	\$90
2S70HF2	Bass/Pike/Saltwater	PS70HF2	7'	H	FAST	2	10-20	1/2-1-1/2	0.570	5.0	3.1	HKS-6	\$100
2S70XHF	Musky/Pike/Saltwater	PS70XHF	7'	XH	FAST	1	12-25	3/4-2	0.580	7.0	3.3	HKS-6	\$100

SC^{II} GRAPHITE CASTING BLANKS (GLOSS BLACK PEARL FINISH)

MODEL	TYPE	EQUIVALENT ST. CROIX ROD MODEL	LENGTH	POWER	ACTION	PCS.	LINE WT. RATING	LURE WT. (OZ.)	BUTT DIAMETER (INCH)	TIP SIZE	BLANK WT. (OZ.)	SUG. HANDLE KIT	BLANK RETAIL PRICE
2C76LM	Trout Trolling	PC76LM	7'6"	L	MODERATE	1	4-10	1/16-3/8	0.445	4.5	2.2	HKC-4	\$75
2C60MLF2	Bass/Walleye	PC60MLF2	6'	ML	FAST	2	4-10	1/8-1/2	0.425	5.0	1.5	HKC-2	\$75
2C66MLF	Bass/Walleye	PC66MLF	6'6"	ML	FAST	1	8-14	3/16-5/8	0.415	5.5	2.0	HKC-3	\$75
2C70MLF	Bass/Walleye	PC70MLF	7'	ML	FAST	1	8-14	3/16-5/8	0.450	5.5	2.1	HKC-3	\$80
2C56MF	Bass	PC56MF	5'6"	M	FAST	1	8-14	1/4-5/8	0.450	5.5	1.3	HKC-1	\$70
2C60MF	Bass/Walleye/Pike	PC60MF	6'	M	FAST	1	10-17	1/4-3/4	0.480	5.5	1.6	HKC-2	\$75
2C66MF	Bass/Walleye/Pike	PC66MF	6'6"	M	FAST	1	10-17	1/4-3/4	0.510	6.0	2.0	HKC-3	\$80
2C66MF2	Bass/Walleye/Pike	PC66MF2	6'6"	M	FAST	2	10-17	1/4-3/4	0.535	4.5	1.9	HKC-3	\$90
2C66MM	Crankbait	PC66MM	6'6"	M	MODERATE	1	8-14	1/4-5/8	0.420	5.0	1.4	HKC-3	\$75
2C70MF	Bass/Walleye/Pike	PC70MF	7'	M	FAST	1	10-17	1/4-3/4	0.520	6.0	2.2	HKC-3	\$85
2C70MM	Crankbait	PC70MM	7'	M	MODERATE	1	8-14	1/4-5/8	0.430	5.0	1.5	HKC-3	\$80
2C60MHF	Bass/Pike/Saltwater	PC60MHF	6'	MH	FAST	1	10-20	3/8-1	0.485	6.0	1.8	HKC-2	\$80
2C66MHF	Bass/Pike/Saltwater	PC66MHF	6'6"	MH	FAST	1	10-20	3/8-1	0.540	6.5	2.2	HKC-3	\$85
2C66MHF2	Bass/Pike/Saltwater	PC66MHF2	6'6"	MH	FAST	2	10-20	3/8-1	0.565	5.0	2.4	HKC-3	\$95
2C66MHM	Crankbait	PC66MHM	6'6"	MH	MODERATE	1	10-20	3/8-1	0.445	6.0	1.9	HKC-3	\$80
2C70MHF	Bass/Pike/Saltwater	PC70MHF	7'	MH	FAST	1	10-20	3/8-1	0.555	6.5	2.7	HKC-3	\$90
2C70MHM	Crankbait	PC70MHM	7'	MH	MODERATE	1	10-20	3/8-1	0.460	5.5	2.3	HKC-3	\$85
2C66HF	Bass/Pike/Saltwater	PC66HF	6'6"	H	FAST	1	12-25	1/2-1 1/2	0.575	6.5	3.0	HKC-3	\$90
2C610HMF	Bass/Pike/Saltwater	PC610HMF	6'10"	H	MOD. FAST	1	12-25	1/4-1	0.605	6.5	2.6	HKC-3	\$85
2C70HF	Bass/Pike/Saltwater	PC70HF	7'	H	FAST	1	12-25	1/2-1 1/2	0.585	6.5	3.3	HKC-4	\$95
2C70HF2	Bass/Pike/Saltwater	PC70HF2	7'	H	FAST	2	12-25	1/2-1 1/2	0.645	7.0	3.2	HKC-4	\$105
2C70HM	Crankbait	PC70HM	7'	H	MODERATE	1	12-25	1/2-1 3/8	0.480	6.0	2.6	HKC-3	\$90
2C76HF	Bass Flippin' Stick	PC76HF	7'6"	H	FAST	1	12-25	1/2-1 1/2	0.585	6.5	3.5	HKC-4	\$110

SC^{II} GRAPHITE MUSKY/SALTWATER BLANKS (GLOSS BLACK PEARL FINISH)

MODEL	TYPE	EQUIVALENT ST. CROIX ROD MODEL	LENGTH	POWER	ACTION	PCS.	LINE WT. RATING	LURE WT. (OZ.)	BUTT DIAMETER (INCH)	TIP SIZE	BLANK WT. (OZ.)	SUG. HANDLE KIT	BLANK RETAIL PRICE
2M610MF	Musky-Small Bucktail/SW	PM610MF	6'10"	M	FAST	1	17-30	1/2-2	0.600	8.0	3.5	HKC-5	\$100
2M66MHF	Musky-All Purpose/SW	PM66MHF	6'6"	MH	FAST	1	20-50	3/4-3	0.655	8.5	3.4	HKC-7	\$105
2M70MHF	Musky-All Purpose/SW	PM70MHF	7'	MH	FAST	1	20-50	3/4-3	0.670	8.5	3.8	HKC-7	\$110
2M70MHF2	Musky-All Purpose/SW	PM70MHF2	7'	MH	FAST	2	20-50	3/4-3	0.600	8.0	3.7	HKC-7	\$115
2M76MHF	Musky-All Purpose/SW	PM76MHF	7'6"	MH	FAST	1	20-50	3/4-3	0.715	7.0	5.4	HKC-7 / HKC-8	\$125
2M80MHF	Musky-All Purpose/SW	PM80MHF	8'	MH	FAST	1	20-50	3/4-3	0.735	7.5	5.8	HKC-8	\$135
2M70HF2	Musky-Jerkbait/SW	PM70HF2	7'	H	FAST	2	30-65	2-6	0.655	11.0	4.3	HKC-7	\$120
2M76HF	Musky-Jerkbait/SW	PM76HF	7'6"	H	FAST	1	30-65	2-6	0.695	9.0	5.6	HKC-7 / HKC-8	\$130
2M80HF	Musky- Large bucktail/SW	PM80HF	8'	H	FAST	1	30-65	2-6	0.705	9.0	6.2	HKC-8	\$135
* 2M86HF	Musky-Large bucktail/SW	PM86HF	8'6"	H	FAST	1	30-65	2-6	0.720	9.0	7.0	HKC-8	\$145
2M63XHF	Musky-Hvy. Jerkbait/SW	PM63XHF	6'3"	XH	FAST	1	36-80	3-8	0.640	10.0	4.2	HKC-7	\$105
2M69XHF	Musky-Hvy. Jerkbait/SW	PM69XHF	6'9"	XH	FAST	1	36-80	3-8	0.655	10.5	4.7	HKC-7	\$115
2M86XHF	Musky- Hvy. Jerkbait/SW	PM86XHF	8'6"	XH	FAST	1	36-80	4-10	0.720	9.5	6.8	HKC-8	\$150
2M79XXXHF	Musky-Unlimited Wt./SW	PM79XXXHF	7'9"	XXXH	FAST	1	65-100	8-30	0.715	13.5	7.4	HKC-8	\$160

* New for 2011

SC^{II} GRAPHITE SALMON/STEELHEAD BLANKS (SATIN BLACK FINISH)

MODEL	TYPE	EQUIVALENT ST. CROIX ROD MODEL	LENGTH	POWER	ACTION	PCS.	LINE WT. RATING	LURE WT. (OZ.)	BUTT DIAMETER (INCH)	TIP SIZE	BLANK WT. (OZ.)	SUG. HANDLE KIT	BLANK RETAIL PRICE
2S106ULS2	Noodle	WS106ULS2	10'6"	UL	SLOW	2	2-6	1/16-1/4	0.420	5.0	2.2	HKS-7	\$90
2S90LM2	Drift	WS90LM2	9'	L	MODERATE	2	4-8	1/8-3/8	0.435	5.5	2.6	HKS-7	\$90
2S116LM2	Drift/Float	WS116LM2	11'6"	L	MODERATE	2	4-10	1/16-1/2	0.455	6.5	3.1	HKS-9	\$100
2S130LM2	Float	WS130LM2	13'	L	MODERATE	2	2-6	1/16-3/8	0.470	5.0	3.3	HKS-9	\$110
2S76MLF2	Spinning	WS76MLF2	7'6"	ML	FAST	2	6-12	1/8-1/2	0.495	5.0	2.0	HKS-5	\$85
2C106MLMF2	Drift	WC/WS106MLMF2	10'6"	ML	MOD. FAST	2	8-14	1/8-1/2	0.465	6.0	3.3	HKC-6 / HKS-6	\$115
2C80MXF	Plugging	WC80MXF	8'	M	X-FAST	1	8-20	3/8-3	0.600	5.5	3.4	HKC-6	\$100
2C86MF2	Casting/Spinning	WC/WS86MF2	8'6"	M	FAST	2	8-12	3/8-3/4	0.485	4.5	3.0	HKC-6 / HKS-6	\$100
2C96MF2	Casting/Spinning	WC/WS96MF2	9'6"	M	FAST	2	8-12	3/8-3/4	0.485	4.5	3.2	HKC-6 / HKS-6	\$110
2C106MMF2	Drift	WC/WS106MMF2	10'6"	M	MOD. FAST	2	8-20	1/4-3/4	0.520	5.5	4.0	HKC-6 / HKS-6	\$120
2C86MHF2	Casting/Spinning	WC/WS86MHF2	8'6"	MH	FAST	2	8-17	3/8-1 1/4	0.525	4.5	3.1	HKC-6 / HKS-6	\$105
2C96MHF2	Casting/Spinning	WC/WS96MHF2	9'6"	MH	FAST	2	8-17	3/8-1 1/4	0.510	4.5	3.3	HKC-6 / HKS-6	\$115
2C80HF	Backbouncing	WC80HF	8'	H	FAST	1	12-25	1-4	0.585	6.0	3.1	HKC-6	\$105
2C80HF2	Backbouncing	WC80HF2	8'	H	FAST	2	15-40	3/4-3	0.750	7.0	4.8	HKC-6	\$130
2C86HF2	Casting/Spinning	WC/WS86HF2	8'6"	H	FAST	2	12-25	1/2-2	0.580	6.0	3.6	HKC-6 / HKS-6	\$110
2C80XHF	Casting	WC80XHF	8'	XH	FAST	1	15-40	2-8	0.640	7.0	3.7	HKC-6	\$120

SC^{III} GRAPHITE INSHORE SALTWATER BLANKS (COPPER PEARL FINISH)



MODEL	TYPE	EQUIVALENT ST. CROIX ROD MODEL	LENGTH	POWER	ACTION	PCS.	LINE WT. RATING	LURE WT. (OZ.)	BUTT DIAMETER (INCH)	TIP SIZE	BLANK WT. (OZ.)	SUG. HANDLE KIT	BLANK RETAIL PRICE
3SW70LM	Spinning/Casting	AIS70LM	7'	L	MODERATE	1	6-12	1/8-3/8	0.400	4.5	1.3	HKS-4 / HKC-2	\$105
3SW70MLF	Spinning/Casting	AIS70MLF	7'	ML	FAST	1	6-12	1/8-1/2	0.420	5.0	2.0	HKS-4 / HKC-2	\$115
3SW76MLF	Spinning/Casting	AIS76MLF	7'6"	ML	FAST	1	6-12	1/8-1/2	0.500	4.0	2.1	HKS-5 / HKC-3	\$120
3SW80MLF	Spinning/Casting	AIS80MLF	8'	ML	FAST	1	6-12	1/8-1/2	0.490	4.5	2.1	HKS-5 / HKC-3	\$125
3SW66MF	Spinning/Casting	AIS66MF	6'6"	M	FAST	1	8-17	3/8-3/4	0.510	5.5	1.9	HKS-5 / HKC-3	\$110
3SW70MF	Spinning/Casting	AIS70MF	7'	M	FAST	1	8-17	3/8-3/4	0.520	5.5	2.2	HKS-5 / HKC-3	\$120
3SW70MM	Spinning/Casting	AIS70MM	7'	M	MODERATE	1	8-17	1/4-5/8	0.430	4.5	1.6	HKS-5 / HKC-3	\$115
3SW76MF	Spinning/Casting	AIS76MF	7'6"	M	FAST	1	8-17	3/8-3/4	0.530	5.5	2.6	HKS-5 / HKC-3	\$125
3SW80MF	Spinning/Casting	AIS80MF	8'	M	FAST	1	8-17	3/8-3/4	0.550	6.0	2.9	HKS-6 / HKC-4	\$135
3SW66MHF	Spinning/Casting	AIS66MHF	6'6"	MH	FAST	1	10-20	1/2-1 1/4	0.530	6.0	2.6	HKS-5 / HKC-3	\$120
3SW70MHF	Spinning/Casting	AIS/AIC70MHF	7'	MH	FAST	1	10-20	1/2-1 1/4	0.545	6.0	3.0	HKS-5 / HKC-3	\$130
3SW76MHF	Spinning/Casting	AIS/AIC76MHF	7'6"	MH	FAST	1	10-20	1/2-1 1/4	0.565	6.0	3.6	HKS-6 / HKC-4	\$135
3SW80MHF	Spinning/Casting	AIS/AIC80MHF	8'	MH	FAST	1	14-30	1/2-2	0.585	6.0	4.1	HKS-6 / HKC-4	\$145
3SW70HF	Spinning/Casting	AIS/AIC70HF	7'	H	FAST	1	15-30	3/4-2	0.595	7.0	3.6	HKS-5 / HKC-3	\$140
3SW76HF	Spinning/Casting	AIS/AIC76HF	7'6"	H	FAST	1	15-30	3/4-2	0.605	7.0	4.2	HKS-6 / HKC-4	\$145
3SW80HF	Spinning/Casting	AIS/AIC80HF	8'	H	FAST	1	17-40	3/4-3	0.665	7.0	4.6	HKS-6 / HKC-4	\$155

SC^{II} GRAPHITE INSHORE SALTWATER BLANKS (GLOSS GREEN FINISH)

MODEL	TYPE	EQUIVALENT ST. CROIX ROD MODEL	LENGTH	POWER	ACTION	PCS.	LINE WT. RATING	LURE WT. (OZ.)	BUTT DIAMETER (INCH)	TIP SIZE	BLANK WT. (OZ.)	SUG. HANDLE KIT	BLANK RETAIL PRICE
2SW70LM	Spinning/Casting	TIS/TIC70LM	7'	L	MODERATE	1	6-12	1/8-3/8	0.415	5.0	1.3	HKC-2 / HKS-4	\$85
2SW76LM	Spinning/Casting	TIS/TIC76LM	7'6"	L	MODERATE	1	6-12	1/8-3/8	0.430	5.0	1.7	HKC-2 / HKS-4	\$90
2SW70MLF	Spinning/Casting	TIS/TIC70MLF	7'	ML	FAST	1	8-14	1/8-1/2	0.455	5.0	2.2	HKC-3 / HKS-5	\$95
2SW76MLF	Spinning/Casting	TIS/TIC76MLF	7'6"	ML	FAST	1	8-14	1/8-1/2	0.465	5.0	2.4	HKC-3 / HKS-5	\$100
* 2SW80MLF	Spinning	TIS80MLF	8'	ML	FAST	1	8-14	1/8-1/2	0.495	5.0	3.0	HKS-5	\$100
2SW66MF	Spinning/Casting	TIS/TIC66MF	6'6"	M	FAST	1	8-17	3/8-3/4	0.515	5.5	2.0	HKC-3 / HKS-5	\$90
2SW66MM	Spinning/Casting	TIS/TIC66MM	6'6"	M	MODERATE	1	8-17	1/4-5/8	0.440	5.0	1.6	HKC-3 / HKS-5	\$85
2SW70MF	Spinning/Casting	TIS/TIC70MF	7'	M	FAST	1	8-17	3/8-3/4	0.520	5.5	2.2	HKC-3 / HKS-5	\$100
2SW70MM	Spinning/Casting	TIS/TIC70MM	7'	M	MODERATE	1	8-17	1/4-5/8	0.450	5.0	1.7	HKC-3 / HKS-5	\$95
2SW76MF	Spinning/Casting	TIS/TIC76MF	7'6"	M	FAST	1	8-17	3/8-3/4	0.545	5.5	2.7	HKC-4 / HKS-6	\$105
2SW76MM	Spinning/Casting	TIS/TIC76MM	7'6"	M	MODERATE	1	8-17	1/4-5/8	0.465	5.0	2.1	HKC-4 / HKS-6	\$100
2SW80MF	Spinning/Casting	TIS/TIC80MF	8'	M	FAST	1	8-17	3/8-3/4	0.565	5.5	3.2	HKC-4 / HKS-6	\$115
2SW66MHF	Spinning/Casting	TIS/TIC66MHF	6'6"	MH	FAST	1	10-20	1/2-1 1/4	0.520	6.0	2.2	HKC-3 / HKS-5	\$100
2SW66MHM	Spinning/Casting	TIS66MHM	6'6"	MH	MODERATE	1	10-20	1/2-1	0.525	6.0	1.9	HKC-3 / HKS-5	\$90
2SW70MHF	Spinning/Casting	TIS/TIC70MHF	7'	MH	FAST	1	10-20	1/2-1 1/4	0.535	6.0	2.7	HKC-3 / HKS-5	\$110
2SW70MHM	Spinning/Casting	TIS70MHM	7'	MH	MODERATE	1	10-20	1/2-1	0.530	6.0	2.2	HKC-3 / HKS-5	\$100
2SW76MHF	Spinning/Casting	TIS/TIC76MHF	7'6"	MH	FAST	1	10-20	1/2-1 1/4	0.575	5.5	3.2	HKC-4 / HKS-6	\$115
2SW80MHF	Spinning/Casting	TIS/TIC80MHF	8'	MH	FAST	1	14-30	1/2-2	0.615	6.5	3.7	HKC-4 / HKS-6	\$125
2SW66HF	Spinning/Casting	TIS/TIC66HF	6'6"	H	FAST	1	12-25	3/4-2	0.570	7.0	3.1	HKC-3 / HKS-5	\$110
2SW66HM	Spinning/Casting	TIS66HM	6'6"	H	MODERATE	1	12-25	3/4-1 1/2	0.560	6.5	2.5	HKC-3 / HKS-5	\$105
2SW70HF	Spinning/Casting	TIS/TIC70HF	7'	H	FAST	1	12-25	3/4-2	0.580	7.0	3.5	HKC-3 / HKS-5	\$120
2SW70HM	Spinning/Casting	TIS70HM	7'	H	MODERATE	1	12-25	3/4-1 1/2	0.570	6.5	3.0	HKC-3 / HKS-5	\$115
2SW76HF	Spinning/Casting	TIS/TIC76HF	7'6"	H	FAST	1	12-25	3/4-2	0.620	6.5	3.7	HKC-4 / HKS-6	\$125
2SW80HF	Spinning/Casting	TIS/TIC80HF	8'	H	FAST	1	17-40	3/4-3	0.655	7.0	4.8	HKC-4 / HKS-6	\$135

* New for 2011

SC^{II} GRAPHITE INSHORE SALTWATER TRAVEL BLANKS (GLOSS GREEN FINISH)

MODEL	TYPE	EQUIVALENT ST. CROIX ROD MODEL	LENGTH	POWER	ACTION	PCS.	LINE WT. RATING	LURE WT. (OZ.)	BUTT DIAMETER (INCH)	TIP SIZE	BLANK WT. (OZ.)	SUG. HANDLE KIT	BLANK RETAIL PRICE
2SW70MLF3	Spinning/Casting	TIS/TIC70MLF3	7'	ML	FAST	3	8-14	1/8-1/2	0.505	4.5	2.0	HKC-3 / HKS-5	\$130
2SW70MF3	Spinning/Casting	TIS/TIC70MF3	7'	M	FAST	3	8-17	3/8-3/4	0.565	5.0	2.3	HKC-3 / HKS-5	\$135
2SW76MF3	Spinning/Casting	TIS/TIC76MF3	7'6"	M	FAST	3	8-17	3/8-3/4	0.600	5.0	3.1	HKC-4 / HKS-6	\$145
2SW70MHF3	Spinning/Casting	TIS/TIC70MHF3	7'	MH	FAST	3	10-20	1/2-1 1/4	0.585	5.5	2.5	HKC-3 / HKS-5	\$145
2SW76MHF3	Spinning/Casting	TIS/TIC76MHF3	7'6"	MH	FAST	3	10-20	1/2-1 1/4	0.635	5.5	3.3	HKC-4 / HKS-6	\$160
2SW76HF3	Spinning/Casting	TIS/TIC76HF3	7'6"	H	FAST	3	12-25	3/4-2	0.650	6.0	3.5	HKC-4 / HKS-6	\$170

SC^{IV} GRAPHITE SURF BLANKS (BELIZE BLUE / 1PC OR BELIZE BLUE/SATIN CARBON FINISH / 2PC)



MODEL	TYPE	EQUIVALENT ST. CROIX ROD MODEL	LENGTH	POWER	ACTION	PCS.	LINE WT. RATING	LURE WT. (OZ.)	BUTT DIAMETER (INCH)	TIP SIZE	BLANK WT. (OZ.)	SUG. HANDLE KIT	BLANK RETAIL PRICE
4SRS70MMF	Spinning	LSS70MMF	7'	M	MOD. FAST	1	8-17	5/8-2	0.650	6.0	2.7	N/A	\$170
4SRS80MMF	Spinning	LSS80MMF	8'	M	MOD. FAST	1	8-17	3/4-3	0.695	6.0	3.6	N/A	\$190
4SRS90MMF2	Spinning/Casting	LSS90MMF2	9'	M	MOD. FAST	2	10-20	1-4	0.740	7.0	4.9	N/A	\$230
4SRS90MM2	Spinning	LSS90MM2	9'	M	MODERATE	2	10-20	3/4-4	0.740	7.0	4.8	N/A	\$230
4SRS100MMF2	Spinning/Casting	LSS/LSC100MMF2	10'	M	MOD. FAST	2	10-20	1-4	0.745	8.0	5.6	N/A	\$260
4SRS106MM2	Spinning	LSS106MM2	10'6"	M	MODERATE	2	10-20	3/4-4	0.780	7.0	5.9	N/A	\$270
4SRS106MHMF2	Spinning/Casting	LSS/LSC106MHMF2	10'6"	MH	MOD. FAST	2	12-25	2-6	0.780	7.0	6.0	N/A	\$280
* 4SRS110MHMF2	Spinning/Casting	LSS/LSC110MHMF2	11'	MH	MOD. FAST	2	15-40	3-8	0.810	7.5	6.6	N/A	\$290

* New for 2011

SC^{II} / SC^{IIW} GRAPHITE SURF BLANKS (SATIN BLACK FINISH)

MODEL	TYPE	EQUIVALENT ST. CROIX ROD MODEL	LENGTH	POWER	ACTION	PCS.	LINE WT. RATING	LURE WT. (OZ.)	BUTT DIAMETER (INCH)	TIP SIZE	BLANK WT. (OZ.)	SUG. HANDLE KIT	BLANK RETAIL PRICE
2SRS70L	Spinning	PSRS70L	7'	L	MOD. FAST	1	4-8	1/4-5/8	0.570	5.0	2.4	N/A	\$90
2SRS70ML	Spinning	PSRS70ML	7'	ML	MOD. FAST	1	6-10	3/8-3/4	0.600	6.5	2.9	N/A	\$95
2SRS70M	Spinning	PSRS70M	7'	M	MOD. FAST	1	8-17	1/2-2	0.575	7.5	3.4	N/A	\$100
2SRS80M	Spinning	PSRS80M	8'	M	MOD. FAST	1	6-17	1/2-2	0.645	8.0	4.8	N/A	\$130
2SRS86M2	Spinning/Casting	PSRS/PSRC86M2	8'6"	M	MOD. FAST	2	6-17	1/2-2	0.840	8.0	5.6	N/A	\$155
2SRS100M2	Spinning/Casting	PSRS/PSRC100M2	10'	M	MOD. FAST	2	6-20	3/4-4	0.815	8.0	8.3	N/A	\$170
2SRS106MH2	Spinning/Casting	PSRS/PSRC106MH2	10'6"	MH	MOD. FAST	2	10-25	2-6	0.880	12.0	12.8	N/A	\$210
2SRS116MH2	Spinning/Casting	PSRS/PSRC116MH2	11'6"	MH	MOD. FAST	2	10-25	2-6	0.990	12.0	13.7	N/A	\$235
2SRS106H2	Spinning/Casting	PSRS/PSRC106H2	10'6"	H	MOD. FAST	2	15-30	4-8	0.885	15.0	12.6	N/A	\$215
2SRC120XH2	Casting	PSRC120XH2	12'	XH	MOD. FAST	2	20-60	4-16	1.200	14.0	18.0	N/A	\$280

SC^{II} GRAPHITE / NSI RESIN BOAT ROD BLANKS (GLOSS BLACK FINISH)



MODEL	TYPE	EQUIVALENT ST. CROIX ROD MODEL	LENGTH	POWER	ACTION	PCS.	LINE WT. RATING	LURE WT. (OZ.)	BUTT DIAMETER (INCH)	TIP SIZE	BLANK WT. (OZ.)	SUG. HANDLE KIT	BLANK RETAIL PRICE
* 2SWC66MF	Conventional	LSWC66MF	6'6"	M	Fast	1	15-30 Mono / 20-40 Braid	N/A	0.520	5.5	3.7	N/A	\$140
* 2SWC70MF	Conv./Spinning	LSWC/LSWS70MF	7'	M	Fast	1	15-30 Mono / 20-40 Braid	N/A	0.570	5.5	4.3	N/A	\$150
* 2SWC66MHF	Conventional	LSWC66MHF	6'6"	MH	Fast	1	30-50 Mono / 40-65 Braid	N/A	0.555	6.0	4.5	N/A	\$160
* 2SWC70MHF	Conv./Spinning	LSWC/LSWS70MHF	7'	MH	Fast	1	30-50 Mono / 40-65 Braid	N/A	0.605	6.0	5.2	N/A	\$170
* 2SWS76MHF	Spinning	LSWS76MHF	7'6"	MH	Fast	1	30-50 Mono / 40-65 Braid	N/A	0.615	6.0	6.3	N/A	\$180
* 2SWC66HF	Conventional	LSWC66HF	6'6"	H	Fast	1	50-80 Mono / 65-100 Braid	N/A	0.595	8.5	4.8	N/A	\$170
* 2SWC70HF	Conv./Spinning	LSWC/LSWS70HF	7'	H	Fast	1	50-80 Mono / 65-100 Braid	N/A	0.650	8.5	6.7	N/A	\$180

SC^V GRAPHITE / NSI RESIN FRESHWATER FLY BLANKS (GLOSS GALLATIN GREEN FINISH)



MODEL	TYPE	EQUIVALENT ST. CROIX ROD MODEL	LENGTH	LINE WT. RATING	PCS.	ACTION	BUTT DIAMETER (INCH)	TIP SIZE	BLANK WT. (OZ.)	SUG. HANDLE KIT	BLANK RETAIL PRICE
5FF793.4	Trout	EFW793.4	7'9"	3	4	FAST	0.285	3.0	1.0	N/A	\$230
5FF864.4	Trout/Panfish	EFW864.4	8'6"	4	4	FAST	0.325	4.0	1.3	N/A	\$250
5FF904.4	Trout/Panfish	EFW904.4	9'	4	4	FAST	0.315	3.5	1.4	N/A	\$260
5FF865.4	Trout/Panfish	EFW865.4	8'6"	5	4	FAST	0.330	4.0	1.5	N/A	\$250
5FF905.4	Trout/Panfish	EFW905.4	9'	5	4	FAST	0.325	3.5	1.6	N/A	\$260
5FF906.4	Trout	EFW906.4	9'	6	4	FAST	0.340	4.0	1.7	N/A	\$260
5FF907.4	Bass/Steelhead	EFW907.4	9'	7	4	FAST	0.350	4.0	1.8	N/A	\$270
5FF967.4	Salmon/Steelhead	EFW967.4	9'6"	7	4	FAST	0.350	4.0	1.9	N/A	\$280
5FF908.4	Bass/Salmon/Steelhead	EFW908.4	9'	8	4	FAST	0.375	4.0	1.9	N/A	\$280
5FF968.4	Salmon/Steelhead	EFW968.4	9'6"	8	4	FAST	0.380	4.0	2.0	N/A	\$290
5FF909.4	Salmon/Pike	EFW909.4	9'	9	4	FAST	0.385	4.0	2.1	N/A	\$290
5FF9010.4	Salmon/Musky	EFW9010.4	9'	10	4	FAST	0.405	4.0	2.3	N/A	\$300

SC^V GRAPHITE / NSI RESIN SALTWATER FLY BLANKS (GLOSS BELIZE BLUE FINISH)



MODEL	TYPE	EQUIVALENT ST. CROIX ROD MODEL	LENGTH	LINE WT. RATING	PCS.	ACTION	BUTT DIAMETER (INCH)	TIP SIZE	BLANK WT. (OZ.)	SUG. HANDLE KIT	BLANK RETAIL PRICE
5FS906.4	Light Saltwater	ESW906.4	9'	6	4	FAST	0.360	4.0	1.8	N/A	\$265
5FS907.4	Saltwater	ESW907.4	9'	7	4	FAST	0.380	4.0	2.0	N/A	\$275
5FS908.4	Saltwater	ESW908.4	9'	8	4	FAST	0.400	4.0	2.1	N/A	\$285
5FS909.4	Saltwater	ESW909.4	9'	9	4	FAST	0.415	4.0	2.3	N/A	\$295
5FS9010.4	Saltwater	ESW9010.4	9'	10	4	FAST	0.425	4.0	2.5	N/A	\$305
5FS9012.4	Big Game Saltwater	ESW9012.4	9'	12	4	FAST	0.440	5.0	2.8	N/A	\$315

SC^{IV} / SC^{III} GRAPHITE FLY BLANKS (GLOSS BURGUNDY FINISH)

MODEL	TYPE	EQUIVALENT ST. CROIX ROD MODEL	LENGTH	LINE WT. RATING	PCS.	ACTION	BUTT DIAMETER (INCH)	TIP SIZE	BLANK WT. (OZ.)	SUG. HANDLE KIT	BLANK RETAIL PRICE
42F602.2	Trout	I602.2	6'	2	2	FAST	0.250	3.5	0.6	HKF-1	\$80
42F663.2	Trout	I663.2	6'6"	3	2	FAST	0.275	3.5	0.7	HKF-1	\$80
42F703.4	Trout	I703.4	7'	3	4	FAST	0.280	3.5	0.8	HKF-1	\$120
42F863.4	Trout	I863.4	8'6"	3	4	FAST	0.300	3.5	1.2	HKF-1	\$140
42F764.2	Trout	I764.2	7'6"	4	2	FAST	0.325	3.5	1.1	HKF-1	\$90
42F764.4	Trout	I764.4	7'6"	4	4	FAST	0.290	3.5	1.0	HKF-1	\$130
42F804.2	Trout/Panfish	I804.2	8'	4	2	FAST	0.335	3.5	1.3	HKF-1	\$90
42F804.4	Trout/Panfish	I804.4	8'	4	4	FAST	0.290	3.5	1.1	HKF-1	\$130
42F864.4	Trout/Panfish	I864.4	8'6"	4	4	FAST	0.310	3.5	1.3	HKF-2	\$140
* 42F904.2	Trout/Panfish	I904.2	9'	4	2	FAST	0.375	4.0	1.6	HKF-2	\$110
* 42F904.4	Trout/Panfish	I904.4	9'	4	4	FAST	0.320	4.0	1.5	HKF-2	\$150
42F805.2	Trout/Panfish	I805.2	8'	5	2	FAST	0.355	4.0	1.4	HKF-2	\$90
42F805.4	Trout/Panfish	I805.4	8'	5	4	FAST	0.305	4.0	1.2	HKF-2	\$130
42F865.2	Trout/Panfish	I865.2	8'6"	5	2	FAST	0.370	4.0	1.6	HKF-2	\$100
42F865.4	Trout/Panfish	I865.4	8'6"	5	4	FAST	0.315	4.0	1.3	HKF-2	\$140
42F905.2	Trout/Panfish	I905.2	9'	5	2	FAST	0.380	4.0	1.7	HKF-2	\$110
42F905.4	Trout/Panfish	I905.4	9'	5	4	FAST	0.330	4.0	1.6	HKF-2	\$150
42F906.2	Trout	I906.2	9'	6	2	FAST	0.390	4.0	1.9	HKF-2	\$110
42F906.4	Trout	I906.4	9'	6	4	FAST	0.350	4.0	1.8	HKF-2	\$150
42F1006.4	Trout	I1006.4	10'	6	4	FAST	0.335	4.0	1.9	HKF-3	\$160
42F907.4	Bass/Steelhead/Saltwater	I907.4	9'	7	4	FAST	0.360	4.0	1.9	HKF-3	\$160
42F1007.4	Salmon/Steelhead	I1007.4	10'	7	4	FAST	0.355	4.0	2.1	HKF-3	\$170
42F908.2	Bass/Salmon/Steelhead/Saltwater	I908.2	9'	8	2	FAST	0.410	4.0	2.0	HKF-3	\$120
42F908.4	Bass/Salmon/Steelhead/Saltwater	I908.4	9'	8	4	FAST	0.390	4.0	2.0	HKF-3	\$160
42F968.4	Salmon/Steelhead	I968.4	9'6"	8	4	FAST	0.390	4.0	2.2	HKF-3	\$160
42F1008.4	Salmon/Steelhead	I1008.4	10'	8	4	FAST	0.395	4.0	2.7	HKF-3	\$170
42F909.2	Salmon/Pike/Saltwater	I909.2	9'	9	2	FAST	0.420	4.0	2.2	HKF-4	\$120
42F909.4	Salmon/Pike/Saltwater	I909.4	9'	9	4	FAST	0.400	4.0	2.2	HKF-4	\$160
42F9010.2	Salmon/Musky/Saltwater	I9010.2	9'	10	2	FAST	0.430	4.0	2.3	HKF-4	\$120
42F9010.4	Salmon/Musky/Saltwater	I9010.4	9'	10	4	FAST	0.405	4.0	2.4	HKF-4	\$160
42F1105.4	Switch	I1105.4	11'	5	4	FAST	0.365	4.0	2.3	N/A	\$170
42F1106.4	Switch	I1106.4	11'	6	4	FAST	0.375	4.0	2.4	N/A	\$170
42F1107.4	Switch	I1107.4	11'	7	4	FAST	0.395	4.0	2.7	N/A	\$180
42F1108.4	Switch	I1108.4	11'	8	4	FAST	0.425	4.0	3.0	N/A	\$180

* New for 2011

SC^{IV} / SC^{II} GRAPHITE FLY BLANKS (FUCHSIA METALLIC FINISH)

MODEL	TYPE	EQUIVALENT ST. CROIX ROD MODEL	LENGTH	LINE WT. RATING	PCS.	ACTION	BUTT DIAMETER (INCH)	TIP SIZE	BLANK WT. (OZ.)	SUG. HANDLE KIT	BLANK RETAIL PRICE
42F804.4-F	Trout/Panfish	N/A	8'	4	4	FAST	0.290	3.5	1.1	N/A	\$130
42F865.4-F	Trout/Panfish	N/A	8'6"	5	4	FAST	0.315	4.0	1.3	N/A	\$140
42F905.4-F	Trout/Panfish	N/A	9'	5	4	FAST	0.330	4.0	1.6	N/A	\$150
42F906.4-F	Trout	N/A	9'	6	4	FAST	0.350	4.0	1.8	N/A	\$150
42F907.4-F	Bass/Steelhead/Saltwater	N/A	9'	7	4	FAST	0.360	4.0	1.9	N/A	\$160
42F908.4-F	Bass/Salmon/Steelhead/Saltwater	N/A	9'	8	4	FAST	0.390	4.0	2.0	N/A	\$160

SC^{III} GRAPHITE FLY BLANKS (GLOSS CANTEEN GREEN PEARL FINISH)



MODEL	TYPE	EQUIVALENT ST. CROIX ROD MODEL	LENGTH	LINE WT. RATING	PCS.	ACTION	BUTT DIAMETER (INCH)	TIP SIZE	BLANK WT. (OZ.)	SUG. HANDLE KIT	BLANK RETAIL PRICE
3F762.4	Trout	A762.4	7'6"	2	4	MODERATE	0.250	3.0	0.9	HKF-1	\$140
3F603.2	Trout	A603.2	6'	3	2	MODERATE	0.290	3.5	0.7	HKF-1	\$100
3F663.4	Trout	A663.4	6'6"	3	4	MODERATE	0.275	3.5	0.9	HKF-1	\$140
3F703.2	Trout	A703.2	7'	3	2	MODERATE	0.280	3.5	0.8	HKF-1	\$110
3F793.4	Trout	A793.4	7'9"	3	4	MODERATE	0.285	3.5	1.0	HKF-1	\$150
3F664.4	Trout	A664.4	6'6"	4	4	MODERATE	0.280	3.5	0.9	HKF-1	\$140
3F704.2	Trout	A704.2	7'	4	2	MODERATE	0.305	3.5	1.0	HKF-1	\$110
3F794.4	Trout	A794.4	7'9"	4	4	MODERATE	0.300	3.5	1.2	HKF-1	\$150
3F864.4	Trout/Panfish	A864.4	8'6"	4	4	MODERATE	0.325	4.0	1.5	HKF-2	\$160
3F904.2	Trout/Panfish	A904.2	9'	4	2	MODERATE	0.380	4.5	1.9	HKF-2	\$120
3F904.4	Trout/Panfish	A904.4	9'	4	4	MODERATE	0.335	4.5	1.8	HKF-2	\$160
3F805.4	Trout/Panfish	A805.4	8'	5	4	MODERATE	0.340	4.5	1.5	HKF-2	\$160
3F865.4	Trout/Panfish	A865.4	8'6"	5	4	MODERATE	0.330	4.5	1.5	HKF-2	\$170
3F905.2	Trout/Panfish	A905.2	9'	5	2	MODERATE	0.390	4.5	2.0	HKF-2	\$130
3F905.4	Trout/Panfish	A905.4	9'	5	4	MODERATE	0.340	4.5	1.9	HKF-2	\$170
3F906.2	Trout	A906.2	9'	6	2	MODERATE	0.405	4.5	2.1	HKF-2	\$130
3F906.4	Trout	A906.4	9'	6	4	MODERATE	0.345	4.5	1.9	HKF-2	\$170
3F907.4	Steelhead/Bass/Saltwater	A907.4	9'	7	4	MODERATE	0.355	4.5	2.0	HKF-3	\$180

SUGGESTED GUIDE SIZE & SPACING CHART

STYLE	INCHES FROM TIP TOP	SIZE
CASTING (BASS & WALLEYE)		
5'6"	4.5-9.5-15.5-22.5-30-39	12-10-8-6-6-6
6'0"	4.5-9.5-15.5-22.5-31.5-42.5	12-10-8-6-6-6
6'2"	4.5-9.5-15.5-22.5-31.5-42.5	12-10-8-6-6-6
6'6"	4-8.5-13.5-19.5-26.5-34.6-44.5	12-10-8-6-6-6-6
7'0"	5-10.5-16.5-23-31-40-50	12-10-8-6-6-6-6
7'6" tel.	4-9-15-22-30-39-49	12-10-8-6-6-6-6
CASTING (MUSKY)		
6'0"	5-10.5-16.5-24-34.5	20-16-12-10-8
6'6"	5-10.5-16.5-24-32.5-42	20-16-12-10-8-8
7'0"	4.5-9.5-15-21-28.5-37.5-48	20-16-12-10-8-8-8
7'6"	4.5-9-14-19.5-25.5-32.5-41-51	20-16-12-10-8-8-8-8
CASTING (LIGHT SALTWATER)		
7'0"	5-11-17-24-31.5-40-49.5	12-10-10-10-8-8-8
7'6"	5-10-15.5-21.5-28-35.5-44-55	12-10-10-10-8-8-8-8
8'0"	4.5-9.5-15-21-28-36-45.5-57	16-12-10-8-8-8-8-8
CASTING (SALMON/STEELHEAD)		
8'0"	4.5-9.5-15-21-28-36-45.5-57	16-12-10-10-8-8-8-8
8'6"	4.5-9.5-15.5-22.5-30.5-39.5-50-63	16-12-10-10-8-8-8-8
10'6"	4.5-10-16.5-24-32-41-50.5-61-71.5-83	16-12-10-8-8-8-8-8-8-8
SPINNING (BASS & WALLEYE/TROUT & PANFISH)		
4'6"UL	5-11.5-20.5-31	20-10-8-6
5'0"UL	5-10.5-17-25-34.25	20-16-10-8-6
5'6"L-M	5.5-11.5-18.5-26.5-37	25-16-10-8-6
6'0"L-M	4-9-15-22-30-40	25-20-16-10-8-7
6'6"L-M	4-9-15-22.5-31.5-42.5	30-20-16-10-8-7
7'0"L-M	4-8.5-13.5-19.5-27-36-49	30-20-16-10-8-7-6
7'6"L-M	4.5-9.5-15.5-22.5-30.5-41-54	30-20-16-10-8-7-6
SPINNING (SALMON/STEELHEAD)		
7'6"	4.5-9.5-15.5-22.5-30.5-41-54	30-20-16-10-8-7-6
8'6"	5.5-12-19.75-28.5-38-50.75-65	30-20-16-10-8-7-6
9'0"	5-10.5-16.5-23.5-32-42-53-68.5	30-20-16-10-8-7-6
FLY (LIGHT TO MED. FRESHWATER)		
6'0"	4-8.5-13.5-19-25-32-40-50	10-4-4-3-3-2-2-2
6'6"	4-8.5-13.5-19-25-33-41.5-52	12-4-4-3-3-2-2-2
7'0"	4-9-15-21.5-28.5-36.6-45.5-56	12-4-4-3-3-2-2-2
7'6"	4.5-9.5-15.5-22.5-30.5-39.5-49.5-61.5	12-4-4-4-3-3-3-3
8'0"	4.25-9.5-15-21.5-29-37.25-46.25-55.5-65.5	12-4-4-4-4-3-3-3-3
8'6"	4.875-10.375-17.375-25.125-33.125-41.625-50.875-60.875-71.875	12-4-4-4-4-3-3-3-3
9'0"	4-9-15-22-29.5-37.5-46.625-56.75-67.25-78	12-10-4-4-4-4-3-3-3-3
9'6"	4-9-15-22-29.5-37-45-53.25-62.125-71.375-81.25	12-10-4-4-4-4-3-3-3-3
10'0"	4-9-15-22-30-39-48-57.5-68.375-79.375-90	12-10-4-4-4-4-3-3-3-3
FLY (HVV. FRESHWATER & SALT.)		
8'6"	4.875-10.375-17.375-25.125-33.125-41.625-50.875-60.875-71.875	16-12-5-5-5-4-4-4-4
9'0"	4.5-9.5-15.5-22-29-36.5-44.5-54-64-76.5	16-12-5-5-5-5-4-4-4-4
9'0" salt.	4.5-9.5-15.5-21.625-28.875-36.5-44.75-53.25-64-76	20-16-12-6-6-6-5-5-5-5
9'6"	4-9-15-22-29.5-37-45-53.25-61.125-71.375-81.25	16-12-5-5-5-5-4-4-4-4
10'0"	4-9-15-22-30-39-48-57.5-68.375-79.375-90	16-12-5-5-5-5-4-4-4-4

For a complete listing of guide spacing for all St. Croix blanks please refer to our website @ www.stcroixrods.com or write us at:
 St. Croix Rod, Attn./Service Dept., P.O. Box 279, Park Falls, WI 54552

TRAVELER ROD CASES



CLOTH SACKS

St. Croix rod sacks are available for most freshwater and many saltwater rod models. They provide added protection when in transit or, sadly, when in storage.



CLOTH ROD SACKS

MODEL	ROD LENGTH & PIECES	NO. OF POCKETS	RETAIL PRICE
RS29	8' - 4 PC., 8'6" - 4 PC.	4	\$10
RS32	9' - 4 PC., 9'6" - 4 PC.	4	\$10
RS36	5'6" - 2 PC.	2	\$10
RS39	6' - 2 PC.	2	\$10
RS42	6'6" - 2 PC.	2	\$10
RS45	7' - 2 PC.	2	\$12
RS48	7'6" - 2 PC.	2	\$12
RS51	8' - 2 PC.	2	\$12
RS54	8'6" - 2 PC.	2	\$12
RS57	9' - 2 PC.	2	\$12
RS60	9'6" - 2 PC.	2	\$12
RS63	10' - 2 PC.	2	\$12
RS66	10'6" - 2 PC.	2	\$12
RS74	6' - 1 PC.	1	\$12
RS80	6'6" - 1 PC.	1	\$12
RS86	7' - 1 PC.	1	\$12
RS92	7'6" - 1 PC.	1	\$12
RS98	8' - 1 PC.	1	\$12

TRAVELER ROD CASES

Each St. Croix Traveler rod case features a durable 1000 denier nylon-covered rod tube. All models include foam-padded ends to protect rod tips and a reinforced handle. Our rod cases feature a divided liner for added protection.

FLY ROD/REEL CASES

MODEL	ROD LENGTH & PIECES	NO. OF POCKETS	RETAIL PRICE
CFRRT29	UP TO 9' - 4 PC.	4	\$30
CFRRT55	UP TO 9' - 2 PC.	2	\$35
CFRRT64	UP TO 10' - 2 PC.	2	\$35

TRAVELER ROD CASES

MODEL	ROD LENGTH & PIECES	NO. OF POCKETS	RETAIL PRICE
RC22	6' - 4 PC.	4	\$30
RC28	8' - 4 PC.	4	\$30
RC29	8'6" - 4 PC.	4	\$30
RC30	6'6" - 3 PC.	4	\$30
RC31	9' - 4 PC.	4	\$30
RC32	7' - 3 PC., 9'6" - 4 PC.	4	\$30
RC34	7'6" - 3 PC.	3	\$30
RC36	5'6" - 2 PC.	2	\$30
RC39	6' - 2 PC.	2	\$30
RC42	6'6" - 2 PC.	2	\$30
RC45	7' - 2 PC.	2	\$30
RC48	7'6" - 2 PC.	2	\$30
RC51	8' - 2 PC.	2	\$40
RC54	8'6" - 2 PC.	2	\$40
RC57	9' - 2 PC.	2	\$40
RC60	9'6" - 2 PC.	2	\$40
RC63	10' - 2 PC.	2	\$40
RC66	10'6" - 2 PC.	2	\$40
RC74	6' - 1 PC.	1	\$50
RC80	6'6" - 1 PC.	1	\$50
RC86	7' - 1 PC.	1	\$50

ICE ROD CASES

MODEL	ROD LENGTH & NO.	RETAIL PRICE
IRC34	32" - 3 Rods & Reels	\$20
*IRC44	42" - 3 Rods & Reels	\$20

* New for 2011





F1K	FLEX COAT® HIGH BUILD LOADED SYRINGE KIT Two 12 cc. syringes loaded with resin and hardener, 4 finishing brushes, mixing cups and sticks.	\$9.00
F2K	FLEX COAT® HIGH BUILD SUPER KIT To finish your rod and guide wrapping. Includes 2 oz. rod wrapping finish, 2 coded syringes, 5 brushes, 5 mixing cups, sticker and underwrap template.	\$11.50
F2S	2 oz. KIT FLEX COAT® HIGH BUILD WRAP FINISH Color-coded, reusable syringes supplied with 2 oz. kit, guarantees exact, accurate measurement of FLEX COAT® 50/50 mix.	\$9.00
F1KL	FLEX COAT® LITE LOADED SYRINGE KIT 24cc w/brushes, cups & sticks.	\$9.50
F2KL	FLEX COAT® LITE SUPER KIT - 2 oz. w/syringes, brushes, cups & sticks.	\$12.00
F2SL	2 oz. KIT FLEX COAT® LITE WRAP FINISH w/syringes.	\$9.50
L4	FLEX COAT® EPOXY BRUSH CLEANER 4oz.	\$4.00
C1	FLEX COAT® COLOR PRESERVER Great color retention for threads. Non-yellowing, easy-to-use, 2 or 3 coats on regular thread.	\$2.10
G4	4 oz. FLEX COAT® EPOXY GLUE High-strength epoxy for gluing handles, reel seats and butt kits.	\$10.50
Q4	4 oz. KIT FLEX COAT® FIVE MINUTE EPOXY GLUE -Yorker Cap.	\$10.75
T2	FLEX COAT® TIP TOP ADHESIVE Easy to use, has great strength. Instructions included.	\$2.00
J2	FLEX COAT® GUIDE FOOT ADHESIVE	\$2.00
K1	UTILITY KNIFE WITH 6 BLADES	\$4.25
K2	PACKAGE OF 5 KNIFE BLADES	\$2.00
B10	PACKAGE OF 10 - 1/4" BRUSHES - Peg Board.	\$3.50
B10L	PACKAGE OF 10 - 1/8" LITE BRUSHES - Peg Board.	\$3.50
HW1	HAND ROD WRAPPER This extendible rod wrapper can be used for all lengths of rods. Has controlled thread tension and adjustable thread feed. Designed to do precision wrappings.	\$62.00
GM6	FINISHING MOTOR 6 RPM This quality 6 r.p.m. continuous-duty gear motor rotates rod for even drying of finishes — excellent accessory to power wrapper.	\$75.00
GM18	FINISHING MOTOR 18 RPM	\$75.00
36GX25	25 FT. ROLL 1/2" WIDE 36 GRIT REAMER ABRASIVE	\$16.50
D10	FLEX COAT® STEP BY STEP ROD BUILDING BOOK Step-by-step illustrated instructions. Contains techniques for both experienced and first-time rod builders.	\$5.00
D20	FLEX COAT® START TO FINISH FLY ROD BUILDING BOOK Step-by-step illustrated instructions. Contains techniques for both experienced and first-time rod builders.	\$12.25
DV1	FLEX COAT® ROD BUILDING "HOW WE DO IT" VIDEO	\$19.95

FLEX COAT® SMALL BUSINESS START-UP KIT

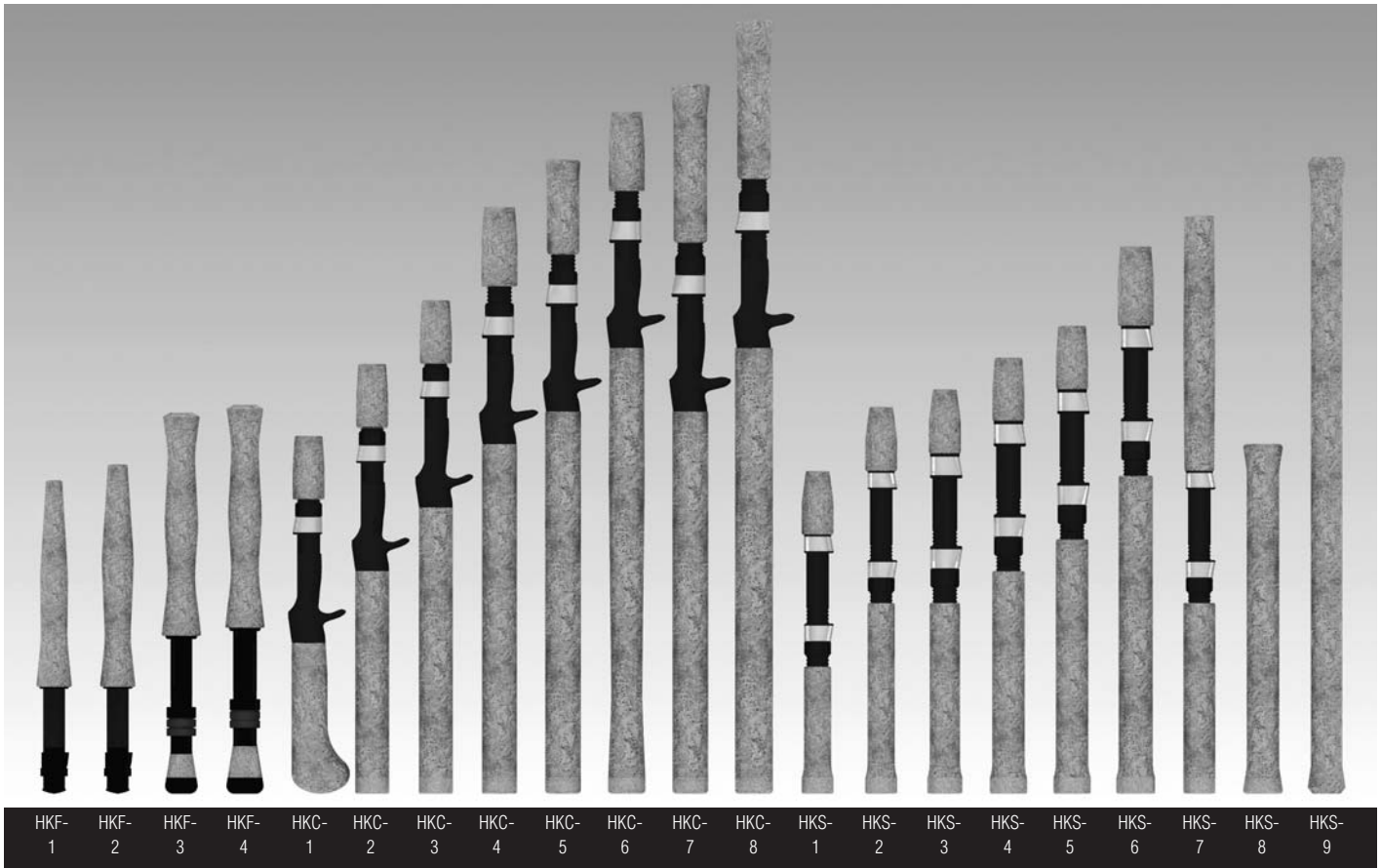
This kit has the tools, supplies and instructional materials you need to start a small business building and repairing custom rods. Earn extra money, keep your equipment in tip-top shape and get inside fishing information from your customers; the expert fisherman who purchase custom rods and have rods repaired in your shop. This complete start up kit will save you \$\$\$.

FSB1\$189.00

KIT INCLUDES:

- | | |
|---|--|
| 1- Flex Coat Professional Hand Rod Wrapper
1- Flex Coat Professional Finishing Motor
1- Flex Coat Step By Step Rod Building Book
1- Flex Coat Rod Building "How We Do It" DVD
1- Flex Coat High Build 2 oz. kit with two syringes
1- Flex Coat Epoxy Glue 4 oz. kit
1- Flex Coat Tip Top Adhesive | 1- Flex Coat Guide Foot Adhesive
1- Flex Coat Utility Knife with 6 extra blades
1- Flex Coat Reamer Abrasive (12 ft. roll)
1- Flex Coat Thread and Line Clippers
10- Flex Coat Finishing Brushes
10- Flex Coat Mixing Cups
10- Flex Coat Mixing Sticks |
|---|--|





CUSTOM HANDLE KITS

MODEL & ORDER NO.	TYPE	REEL SEAT	OVERALL LENGTH	BUTT & FLY CORK LENGTH	FOREGRIP & FIGHTING BUTT LENGTH	RETAIL PRICE
HKF-1	Fly	Uplocking, black anodized aluminum with ebony wood spacer.	9 7/8"	6 1/2"	-	\$30.00
HKF-2	Fly	Uplocking, black anodized aluminum with ebony wood spacer.	10 3/8"	7"	-	\$30.00
HKF-3	Fly	Uplocking, black anodized aluminum.	12"	7"	1 1/4"	\$30.00
HKF-4	Fly	Uplocking, black anodized aluminum.	12 1/4"	7"	1 1/2"	\$33.00
HKC-1	Casting	Fuji® TCS 16 with frosted silver hood.	11 1/4"	4 3/4"	2"	\$28.00
HKC-2	Casting	Fuji® TCS 16 with frosted silver hood.	13 1/2"	7"	2"	\$20.00
HKC-3	Casting	Fuji® TCS 16 with frosted silver hood.	15 1/2"	9"	2"	\$20.00
HKC-4	Casting	Fuji® TCS 17 with frosted silver hood.	18 3/8"	11"	2 1/2"	\$23.00
HKC-5	Casting	Fuji® TCS 17 with frosted silver hood.	19 7/8"	12"	3"	\$25.00
HKC-6	Casting	Fuji® TCS 17 with frosted silver hood.	21 3/8"	14"	2 1/2"	\$30.00
HKC-7	Casting	Fuji® TCS 18 with frosted silver hood.	22 1/4"	12"	5"	\$27.00
HKC-8	Casting	Fuji® TCS 18 with frosted silver hood.	24 1/4"	14"	5"	\$28.00
HKS-1	Spinning	Fuji® DPS 16 with frosted silver hoods.	10 1/8"	4"	2"	\$18.00
HKS-2	Spinning	Fuji® DPS 16 with frosted silver hoods.	12 1/8"	6"	2"	\$19.00
HKS-3	Spinning	Fuji® DPS 17 with frosted silver hoods.	12 3/4"	6"	2"	\$20.00
HKS-4	Spinning	Fuji® DPS 17 with frosted silver hoods.	13 3/4"	7"	2"	\$20.00
HKS-5	Spinning	Fuji® DPS 17 with frosted silver hoods.	14 3/4"	8"	2"	\$21.00
HKS-6	Spinning	Fuji® DPS 17 with frosted silver hoods.	17 1/4"	10"	2 1/2"	\$22.00
HKS-7	Spinning	Fuji® DPS 16 with frosted silver hoods.	18 1/8"	6"	8"	\$20.00
HKS-8	Spinning	N/A	11"	-	-	\$20.00
HKS-9	Spinning	N/A	20"	-	-	\$23.00

Every Custom Handle Kit features an 18# urethane foam shim and three black, PVC rubber wind checks.

St. Croix's custom handle kits feature top-quality components and come complete with butt cap cork plugs, winding checks and graphite reel seat shims where applicable.

CORK RINGS

Make your own custom handle shapes from our "super-quality" cork rings.

ORDER NO. 122-101\$.95
 DESCRIPTION 1 1/4" x 1/2" x 1/4" I.D.



ROD BLANK COLORS



GLOSS GALLATIN GREEN



GLOSS BELIZE BLUE



MATTE SPRUCE GREEN



GLOSS CANTEEN GREEN PEARL



SATIN BLACK



GLOSS FOREST GREEN PEARL



GLOSS BLUE/GREEN FLIP



GLOSS COBALT BLUE PEARL



CARBON PEARL



GLOSS BLACK PEARL



COPPER PEARL



GLOSS GREEN



FUCHSIA METALLIC



GLOSS BURGUNDY



GLOSS BLACK

WARRANTY AND SERVICE POLICY

St. Croix fishing rod blanks are carefully crafted and individually inspected to assure that the highest quality standards are met. However, should failure occur due to defects in materials or workmanship, the rod blank will be repaired or replaced (at St. Croix's option) for no charge, during the warranty period.

SC^V, SC^{IV} and SC^{III} blanks feature our limited lifetime warranty. SC^{II}, SC^{IW} and SC^I blanks carry a five-year warranty.

All warranty claims must be made directly to the factory by the consumer. St. Croix dealers are not authorized to perform warranty service on behalf of the factory. Also, rod blanks repaired elsewhere will void this warranty. Blanks should be properly packaged and insured. A copy of the store receipt showing date of purchase and \$20.00 for return shipping and handling must accompany all claims. Ship rod blanks to:

Attn: Service Department
ST. CROIX ROD
856 4th Avenue North
Park Falls, Wisconsin 54552

Rod blanks not covered under this warranty may also be repaired or replaced for a reasonable charge. Blanks with expired warranties, or blanks that have been damaged due to accident, misuse or normal wear are not covered under this warranty. St. Croix will advise you of the cost of repair or replacement and await your approval prior to proceeding.

This warranty is limited to repair or replacement of rod blanks only and does not cover consequential or incidental damages. St. Croix shall not be liable for incidental or consequential damages.

